

TELOS - Rubber stamp

Stamping system TELOS

Our baselock rubber stamp TELOS is a versatile stamping system for any industrial application. Each rubber type has a special baselock system which fits in exactly in a corresponding baselock plate. Therefore, these rubber types can be inserted easily by pressing the type into the baseplate.

Our rubber types are available in special pre-manufactured sets in various character sizes or as single types to your requirements. Logotypes and blocktypes (complete words or letter/figure combinations) can also be manufactured to your demands.

The rubber types TELOS can be used in almost any stamping system like standard hand stamps, hand rollers, self-inking stamps or contact coding machines. In combination with our stamping inks, almost any material can be marked with our TELOS rubber stamps.



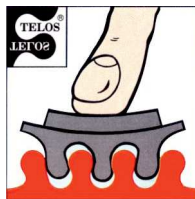
Single types - Block types

TELOS rubber stamps can be supplied in various styles. Usually, our TELOS rubber stamps are available in baselock sets. Three sets are available off-the-shelf containing different single types matched to typical industrial requirements. Beside the sets, single types and logotypes can be supplied separately in any quantity.

Baselock Logotypes or blocktypes can be supplied to your very requirements. Combinations of letters or figures can be moulded as one piece for constantly used legends. Any special design or trademark can be produced from supplied artwork giving you the possibility to customize the imprint to your needs.

Baselock rubber types are available as follows:

- Single baselock characters
- Baselock rubber type sets A-Z
- Baselock rubber type sets a-z
- Baselock rubber type sets 0-9
- Baselock rubber type set A
- Baselock rubber type set B
- Baselock rubber type set C



Rubber quality

TELOS baselock rubber stamps are available in two standardized material thicknesses and three different rubber qualities. The material thickness may be 5 mm (standard thickness) or 7 mm for special applications. Please note, that both thicknesses cannot be used for one imprint.

Regarding the rubber quality, three different qualities are available. The standard quality which comes as a grey rubber, is for standard applications. Another quality is the oil- and acid resistant quality. This quality is used when the stamping ink contains oil components or the material stamped has an oil film on the surface. The third quality is a oil resistant hard rubber which is also used for oil-containing components.

Advantages

- Quick and easy to change print
- Extremely versatile to industrial requirements
- Extensive range of type styles
- Customised logo styles
- No spacers needed
- Different character sizes and font styles in one print
- TELOS baseplate can be mounted on cylindrical surfaces

Materials to stamp on

- Wood, wooden boxes, palettes
- Jute bags, paper bags, natural fibers
- Cardboards, paper, corrugated fiberboards
- Plastics, plastic parts, rubber, plastic foil
- Metal, metal sheet, metal foil



TELOS - Rubber stamp

TELOS Baselock plate

Each baselock rubber type needs a corresponding baseplate to be fitted in. This TELOS baseplate is available in any size up to a maximum of 600x250 mm. The baseplate is easily mounted on the stamp holder, which can be a standard hand stamp, cradle stamp, roller stamp, or drum-type.

Three different baseplate qualities are available

- Normal rubber (red)
- Oil-steady and acid-steady rubber (brown)
- Oil-steady party-hard rubber (black)

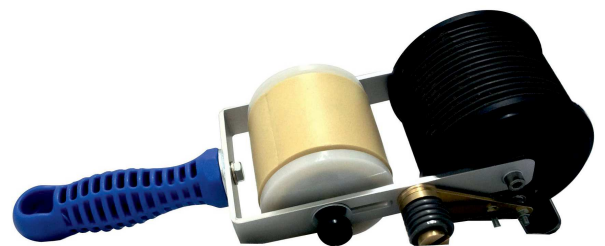


TELOS Handroll stamps

Hand roller stamps are manual printing rollers and are simple to use for printing cartons and other porous surfaces. In combination with TELOS baselock types, these hand rollers allow versatile prints which can be set and changed quickly.

The corresponding plastic ink rollers are available un-inked or pre-inked in many colours. Hand roll stamps are available for continuous rotation or as standard hand rollers with spring return.

Article	Printing length	Printing width
Handroll stamp Nr. 1-09	260 mm	12.5 mm
Handroll stamp Nr. 2-09	260 mm	25 mm
Handroll stamp Nr. 3-09	260 mm	50 mm
Handroll stamp Nr. 4-09	260 mm	65 mm
Handroll stamp Nr. 5-09	260 mm	84 mm
Handroll stamp Nr. 6-09	260 mm	100 mm
Handroll stamp Nr. 7-09	260 mm	115 mm



Handroll stamps - Applications

- Cardboard boxes
- Wooden boxes
- Jute bags
- Paper bags
- Styrofoam
- Plastic foil, PVC
- Metal foils
- Concrete

Our handroll stamps are used in:

- packaging industry
- food and food packaging industry
- wooden industry
- freight and cargo industry
- transportation



TELOS - Rubber stamp

Stamping system TELOS

IPPC - Marking of wood

Packaging wood is widespread in the international freight traffic to the transport and protection of goods. Wooden packaging is often produced of inferior wood, because of low-quality requirements. That's why such wood is often afflicted with rodents (insects, mushrooms) which are spreaded with the packaging in other areas all over the world.

To prevent this carry-over, many countries have decided to impose import regulations which were harmonised within the scope of the international protection of plants agreement (IPPC) in 2003. The "international standard of phyto-sanitary measures No. 15" (briefly No. ISPM 15) with the guidelines to the regulation of wooden packaging in international trade was implemented by 166 states so far.

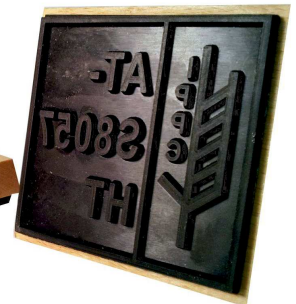
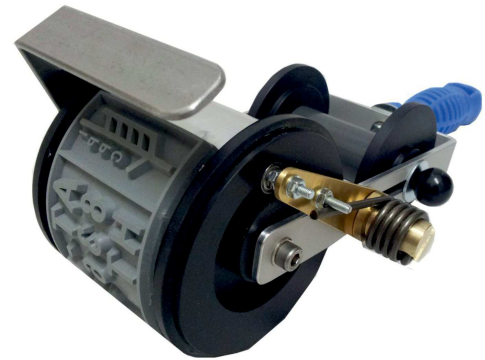
Concerned by this measure are packaging material of massive wood for the transport, protection and storing of goods and also palettes, boxes, sheds, drums, barrels, but also dunnage and wedges for fastening of goods. However, wood with a thickness of less than 6 mm are not subject to the regulations of the No. ISPM 15.

For these marking regulations we offer the suitable customized logotype stamp. The marking encloses on the one hand the standardized IPPC logo and, on the other hand, the country identification number, a company identification number and the kind of the treatment.

Available IPPC stamp solutions

We can supply IPPC - ISPM Nr. 15 stamps as vulcanized hand stamp or as hand roller stamp. Beside the standard and recommended sizes we also offer customized stamps with a standard handle or with a special handle for larger sizes.

We manufacture our IPPC stamps with a deep vulcanized relief, the rubber is resistant to oil and acid and is therefore most suitable for permanent industrial marking with stamping ink.



TELOS - Rubber stamp

Stamping system TELOS

TELOS Assortment

TELOS rubber stamps can be supplied in various styles. Usually, our TELOS rubber stamps are available in baselock sets. Three sets are available off-the-shelf containing different single types matched to typical industrial requirements.

Our baselock type sets come together with a ribbed plastic storage for easy and clear arranged storage. In addition, a tweezer is included in any set.

TELOS type sets are available in various character sizes ranging from 1.5 mm to a maximum of 60 mm. In special manufacturing, even larger character sizes are possible. Also different font styles are available for your marking requirements.

When ordering your TELOS baselock set, please state the following information

- Type of set (A, B or C)
- Font style (2, 4, 7, 9, 24)
- Character size (6/8/10/12/16/20/24/28/...)

The character size stated here is not the size in mm but in pixel. Approx. 4 pixels correspond to 1 mm. For example, if you would like to order a set with figures only, font style 2 in 5 mm character size, the correct number would be

TELOS Font style

Font style "2"

ABCDEFGHIJKLMNOPQRSTUVWXYZ

Sizes:

2/6 (1.5 mm), 2/8 (2.0 mm), 2/10 (2.5 mm), 2/12 (3.0 mm), 2/16 (4.0 mm)
2/20 (5.0 mm), 2/24 (6.0 mm), 2/28 (8.0 mm), 2/36 (10 mm),
2/48 (13 mm), 2/60 (16 mm)

Font style "4"

ABCDEFGHIJKLMN OPR

Sizes:

4/6 (1.5 mm), 4/8 (2.0 mm), 4/10 (2.5 mm), 4/12 (3.0 mm), 4/16 (4.0 mm)
4/20 (5.0 mm), 4/24 (6.0 mm), 4/28 (8.0 mm), 4/36 (10 mm),
4/48 (13 mm), 4/60 (16 mm), 4/72 (20 mm)

Font style "9"

ABCDEFGHIJKLMN OPR STUVWX

Sizes:

9/8 (2.0 mm), 9/10 (2.5 mm), 9/12 (3.0 mm), 9/16 (4.0 mm),
9/20 (5.0 mm), 9/24 (6.0 mm), 9/28 (8.0 mm), 9/36 (10 mm),
9/48 (13 mm), 9/60 (16 mm), 9/72 (20 mm), 9/84 (23 mm)

Font style "24"

ABCDEFGHIJXYZ

Sizes:

24/10 (3.0 mm), 24/12 (3.5 mm), 24/16 (4.5 mm)
24/20 (5.5 mm), 24/24 (7.0 mm), 24/28 (8.0 mm)
24/36 (10 mm), 24/48 (15 mm), 24/60 (18 mm)
24/72 (22 mm), 24/84 (26 mm), 24/96 (30 mm)
24/108 (35 mm), 24/144 (44 mm), 24/192 (60 mm)

Assortments - Content

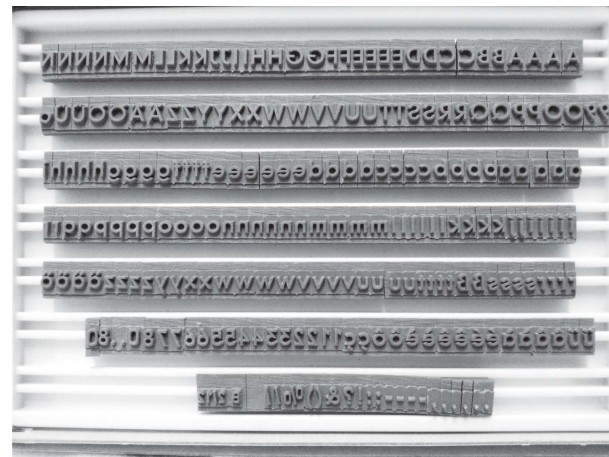
Assortment "A" - 152 types assorted

6/A, 4/B, 4/C, 4/D, 6/E, 4/FA, 4/G, 4/H, 4/I, 4/J, 4/K, 4/L, 4/M, 6/N, 4/O,
4/P, 2/Q, 4/R, 4/S., 4/T, 4/U, 4/V, 4/W, 2/X, 2/Y, 2/Z, 2/Ä, 2/Ö, 2/Ü
2/1, 2/2, 2/3, 2/4, 2/5, 2/6, 2/7, 2/8, 2/9, 2/0
4/"., 4/"', 4/"-", 2/"':", 1/"!'", 1/"?'"', 1/"&'", 1/"('", 1/"")'", 1/"%'", 1/"/'"



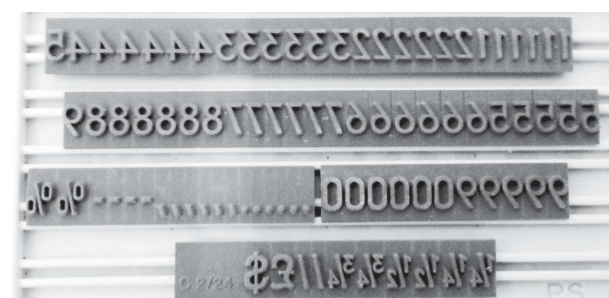
Assortment "B" - 236 types assorted

4/A, 2/B, 2/C, 2/D, 4/E, 2/FA, 2/G, 2/H, 2/I, 2/J, 2/K, 2/L, 2/M, 4/N, 2/O,
2/P, 2/Q, 2/R, 2/S., 2/T, 2/U, 2/V, 2/W, 2/X, 2/Y, 2/Z, 2/Ä, 2/Ö, 2/Ü
6/a, 4/b, 4/c, 4/d, 6/e, 4/f, 4/g, 4/h, 6/i, 2/j, 4/k, 6/l, 4/m, 6/n, 4/o, 4/p,
2/q, 6/r, 4/s, 1/ß, 4/t, 4/u, 2/v 4/w, 2/x, 2/y, 4/z, 2/ä, 2/ö, 2/ü, 2/ä, 2/ä,
2/ê, 2/ê, 2/ê, 2/ê, 2/c
2/1, 2/2, 2/3, 2/4, 2/5, 2/6, 2/7, 2/8, 2/9, 2/0
4/"., 4/"', 4/"-", 2/"':", 1/"!'", 1/"?'"', 1/"&'", 1/"('", 1/"")'", 1/"%'", 1/"/'"



Assortment "C" - 88 types assorted

2/1, 2/2, 2/3, 2/4, 2/5, 2/6, 2/7, 2/8, 2/9, 2/0
6/"., 6 / " ', 4 / " -, 2 / " ' % ", 2 / " 1/4 " 2 / " 1/2 ", 2 / " 3/4 " 2 / " ' 1 / " \$ ",
1 / " L "



Stencils and stencil equipment

Stencil marking

MARSH Rolmark fount roller

Our MARSH fountain roller is an important marking tool for stencil marking. Our fountain roller RFR-200 is very well suited for marking boxes, carton, cardboard, textiles, corrugated fibreboards, wooden pallets, jute bags, metal barrels, plastics and many other materials.

The fountain roller is available in two different sizes with 38 mm and 76 mm width. Both fountain rollers are made of durable aluminium and brass for tough environments. The roller itself is of long wearing neoprene. The rollers itself are replaceable for an enhanced durability.

Our MARSH fountain rollers use pump action for fast, uniform dispensing of ink without any ink fade-out or flooding. The ink itself is filled into the handle of the brush and can be refilled any time. For further information on our stamping inks, please visit our special site "Stamping inks" in this catalogue.

When using our fountain roller in combination with die cut stencils, please note that the contact pressure should be low so that the ink is not pressed behind the stencil. The quality of your imprints will increase.

Order Numbers:

MAR RFR200 1.5 – Fountain roller 38 mm

MAR RFR200 3.0 – Fountain roller 76 mm

MAR RFR250 1.5 – Replacement roller 38 mm

MAR RFR250 3.0 – Replacement roller 76 mm

MARSH Fount brush

Our MARSH fountain brush makes strong and clear marks on all types of surfaces using split bristles for solid coverage. This marking tool is designed for both porous and non-porous applications. It is also great for uneven surfaces, such as crates or concrete.

The ink can be refilled at the end of the handle which extends the product life. This life span is even enhanced due to replaceable brush tips. For further information on our stamping inks, please visit our special site "Stamping inks" on this webpage.

The MARSH fountain brush is available in two different sizes:
Fountain brush FB-25 = 38 mm diameter
Giant fountain brush FB-80 = 80 mm diameter

MARSH Marking pen M99

Our marking pen Marsh 99 is a refillable industrial quality valve action marker. It provides years of reliable service and is most suitable for shipping and sign marking.

The stamping ink is filled directly into the handle. Replacement pen tips in three different styles are available.

- Standard round point 5 mm
- Chisel 10 mm
- T-shaped 25 mm

MARSH Marking spray

Our industrial spray is designed for all purpose and sprays adhesive and permanent bond on most materials. Our stencil sprays are available in 7 colours for permanent, waterproof, fast-drying, bold marks. Our spray inks are lead free, CFC and CFHC-free and environmentally safe.

Our sprays are also available in white or tan to cover old marks and re-use cartons. This permanent and waterproof mark will provide maximum coverage with minimum spray-mist and running.



Stencil and stencil sets

Stencil marking

Marking stencils - Zinc

Die cut stencils are an economical way to establish company and/or product identification.

We offer two different kinds of die cut stencils – stock die cut stencils (A-Z, 0-9, standard logos) and customized die cut stencils.

Stock die cut stencils are commonly used stencils including the standard alphabet and figure sets as well as various standard shipping marks. Our standard stencils are available in various character sizes ranging from 10 mm to 300 mm. Beside the single stencils (A-Z, 0-9), you can also use interlocking stencils. These interlocking stencils are slot together easily.

Customized die cut stencils are customized to your requirements. With these stencils you can easily mark your company logo, address, text and even artwork.

Stencil sets of zinc are most suitable for marking boxes, palettes, packaging cardboards, barrels, concrete and various other materials. Our zinc stencils are not inflammable, resistant to acid and highly bendable to mark also round materials like pipes or tubes.

Marking stencils - plastic

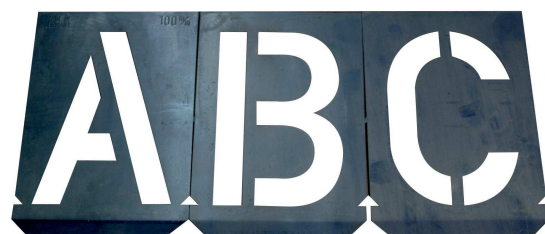
Plastic stencils can be used exactly the same way like zinc stencils. Instead of zinc plate, these stencils are made of flexible PVD plastic. Our plastic stencils are available as upper case alphabet or figure sets.

These stencils are most suitable to mark pipes, tubes, barrels but also cardboard boxes, carton, corrugated fiberboards, wood and wooden palletes. Our stencils are available in various character sizes to meet your marking needs. A large range of accessories is also available for your applications.

Interlocking stencils

Our interlocking stencils are marking tools for the stencil marking of crates, pallets, boxes, aisles, cardboard and wooden boxes. These stencils are even more comfortable to use as you can simply slot the single stencils together to create words, numbers, signs and more.

Our interlocking stencils are made of brass or zinc, depending on the character size. With restrictions, it is possible to slot together even stencils with different character sizes. Interlocking stencils can be used together with any marking accessories like fountain rollers or fountain brushes. With our special marking inks, almost any material can be marked.



Availability - stencils sets of zinc

Character size:	A-Z	0-9	Single
Character size 10 mm	X	X	-
Character size 15 mm	X	X	-
Character size 20 mm	X	X	X
Character size 25 mm	X	X	X
Character size 30 mm	X	X	X
Character size 40 mm	X	X	X
Character size 50 mm	X	X	X
Character size 60 mm	X	X	X
Character size 70 mm	X	X	X
Character size 80 mm	X	X	X
Character size 90 mm	X	X	X
Character size 100 mm	X	X	X
Character size 150 mm	X	X	X
Character size 200 mm	X	X	X
Character size 250 mm	X	X	X
Character size 300 mm	X	X	X

Other sizes: on request

Availability - Interlocking stencils

Character size:	A-Z	0-9	Single
Interlocking stencil 6.4 mm	X	X	-
Interlocking stencil 9.5 mm	X	X	-
Interlocking stencil 12.7 mm	X	X	-
Interlocking stencil 15.9 mm	X	X	-
Interlocking stencil 19.1 mm	X	X	-
Interlocking stencil 25.4 mm	X	X	-
Interlocking stencil 38.1 mm	X	X	-
Interlocking stencil 50.8 mm	X	X	-
Interlocking stencil 63.5 mm	X	X	-
Interlocking stencil 76.2 mm	X	X	-
Interlocking stencil 88.9 mm	X	X	-
Interlocking stencil 101.6 mm	X	X	-
Interlocking stencil 127.0 mm	X	X	-
Interlocking stencil 152.4 mm	X	X	-
Interlocking stencil 177.8 mm	X	X	-
Interlocking stencil 203.2 mm	X	X	-

Stencil and stencil sets

Customized stencils

Beside the standard sets A-Z and 0-9 as well as interlocking stencils, we offer customized metal or plastic stencils. Custom made stencils can be used to create a variety of useful signs.

Stencils can indicate the direction to a location, important safety information, mark specific names or numbers or a company logo. These stencils can include a fixed text or a customized logo.

We manufacture customized stencils from both, plastic or Aluminium or Metal.

Stencil marking

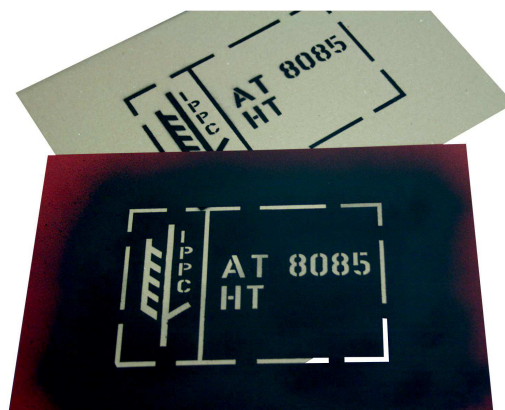


IPPC Stencils

IPPC marking with stencils is a very cheap method for IPPC ISPM Nr. 15 marking. Stencil marking however is only suitable for flat surfaces and wooden crates but not for pallet marking.

We manufacture the stencils exactly to your request. In case of an inquiry, please let us know both, size of the stencil as well as size of the imprint.

IPPC - ISPM Nr. 15 stencils can be manufactured from Aluminium foil or plastic. Please note that plastic stencils are not suitable for stamping ink containing oil.



Oilboard

Oilboard stencils are the cheapest way to mark your products with the stencil technology. Our oilboards are exceptional high quality oil-treated paper board to get clean and sharp marks. Oilboard stencils are ideal for flat or curved surfaces.

Three different qualities of oilboards are available:

Natural oilboard:

Will not tear or pull when cut. This oilboard is available in various standard sizes reaching from 10x15 cm to 60x90 cm and is also available as a 120 cm x 9 m roll. The material thickness ranges from 1.8 mm to 3.8 mm, depending on the application. This oilboard is packed in packages of 22.5 kg or 45 kg cases.

Canary oilboard:

This premium oilboard is ideal for extremely clean cut letters, available in 3.8 mm material thickness. This oilboard is also available in various sizes and rolls.

Availability oilboard

Dimensions:	0.2 mm	0.4 mm
Oilboard 310 x 115 mm	X	-
Oilboard 610 x 155 mm	X	X
Oilboard 610 x 155 mm	-	X
Oilboard 610 x 180 mm	-	X
Oilboard 910 x 280 mm	-	X
Oilboard 910 x 610 mm	-	X

TELOS - Rubber stamp

Stamping system TELOS

Stencil cutting machine "MARSH"

Our stencil cutting machine "MARSH" is a manual cutting machine to cut stencils fast and easy out of an oilboard.

All characters are on a large, bold-character dial for error free operation. The dial is easy to use, just simply position the dial on the right character and press the hand lever. After every cut, the oilboard is transported to the next station automatically. The procedure repeats until your individual stencil is completed. With this machine, you can easily produce stencils up to 4 line text, in special manufacturing, also 5 lines are possible.

Every machines comes with a complete figure and letter set as well as the most important punctuation.

Stencil cutting machines - Advantages

- stronger, corrosion resistant cutting edges and alloy punch for longer life
- cut stencils faster and easier with the oilboard release lever
- self-lubricated rings – reduce noise
- Easy-to-read characters on the large, bold-character dial
- Accurate, automatic spring with the specially designed cam and ratchet
- Special fonts available
- Special characters can be made to your requirements

Stencil cutting machine MARSH – Available character size

Our stencil cutting machine "MARSH" is available in 4 different character sizes:

- MARSH 1": 25.4 mm character size - 4(5) lines - for oilboard 610x180 mm
- MARSH ¾": 19 mm character size - 4 lines - for oilboard 610x155 mm
- MARSH ½": 12 mm character size - 6 lines - for oilboard 610x155 mm
- MARSH ¼": 6 mm character size - 8 lines - for oilboard 310x155 mm

Stencil cutting machine "MARSH XL"

Our stencil cutting machine "MARSH XL" is an extremely robust, easy-to-use and versatile stencil cutting machine.

In contrast to our stencil cutting machine "MARSH", this machine works with single characters which are available in various character sizes. The oilboard stencil may reach up to a maximum size of 1200 x 295 mm.

Stencil cutting machine MARSH XL – How to use

Our stencil cutting machine "MARSH XL" is very easy to use and has several advantages in contrast to our stencil cutting machine "MARSH".

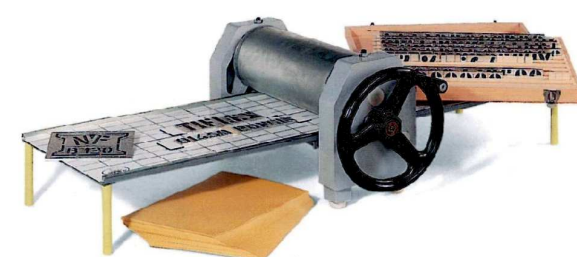
First, the single characters are placed on the large table to your requirements. The characters can be adjusted to your needs, using the magnetic lining ruler you can chose the position of the characters easily and precisely. With this machine, it is easy to use more than one character size in one single oilboard stencil. After adjusting the stencils on the table, simply put the oilboard on the top of the stencils. In the next step, please put the cutting board above the oilboard. Just a few seconds away from your stencil, you only have to turn the handle to cut your complete stencil.

This machine is most suitable for the production of multiple identical stencils. You only have to put a new oilboard on the characters and repeat the process. So you can produce your customized stencil within seconds.

Stencil cutting machine MARSH XL – Basic equipment

The standard machine comes together with the following equipment:

- Machine with table & cylinder
- Super size cutting board
- Magnetic lining rules
- Small magnetic lining wedge
- Large magnetic lining wedge



Stencil cutting dies - Character sizes

Character size:	Narrow	Normal	Set 111	Single
6.35 mm	-	X	-	X
10.0 mm	-	X	X	X
12.0 mm	-	X	X	X
15.0 mm	-	X	X	X
20.0 mm	X	X	X	X
30.0 mm	X	X	X	X
40.0 mm	X	X	X	X
50.0 mm	X	X	X	X
70.0 mm	X	X	-	X
100.0 mm	X	-	-	X

Content: Type set 111

A	B	C	D	E	F	G	H	I	J	K	L	M	N	O	P	Q	R	S	T	U
4	2	3	3	6	3	3	2	5	2	3	4	3	4	4	3	2	5	6	4	3
V	W	X	Y	Z	&	%	.	/	-	,	0	1	2	3	4	5	6	7	8	9
3	1	1	1	1	1	1	4	1	2	1	2	2	2	2	2	2	2	2	2	2

Accessories - Additional equipment

- Machine with table & cylinder
- Super size cutting board
- Magnetic lining rules
- Small magnetic lining wedge
- Large magnetic lining wedge
- Special characters

TELOS - Rubber stamp

Stamping system TELOS

Contact coding is the traditional low cost marking and is still widely used around the world as very cost effective solution. Contact coders are ideal where a product requires infrequent message changing or the environmental requires a non-electronic solution with zero maintenance.

Our contact coders use interchangeable TELOS rubber types together with either pre-impregnated plastic ink rollers. With our coding devices, you can easily print your company name, logo, article number, quantity, trade marks and other information on carton, corrugated boxes, jute bags, wooden crates and other porous and non-porous materials.

Contact coding – How to use

Our contact coding devices are simple and efficient marking machines. Our printers are manufactured from robust aluminium castings and roller bearings giving long trouble free life. The coders are mounted to a conveyor with a simple mounting bracket. The boxes to mark are led to the marking unit, the printing pressure can be adjusted to suit the strength of the carton and to obtain a perfect print.

The print can be made on almost any position of the carton, on top, on the left or on the right side. The type drum rotation is controlled to give an identical print position on each carton. Also available for endless printing.

Each contact coding unit uses baselock rubber types TELOS giving perfect printing day after day without the need for any maintenance. Many standard font styles are available in baselock range, customized print styles, logos and graphics are produced exactly to your requirements.

Contact coding - Applications

Our contact coders are used in many areas of the industry, especially in the packaging departments. Almost any material, porous or non-porous can be marked with our contact coders. The most important applications are:

- Marking of cardboard boxes, carton or corrugated boxes
- Marking of food packaging
- Export marking of boxes, crates and carton
- And similar applications

Contact coder "Rollerpack"

Our contact coder "Rollerpack" is an automatic rotary marker suitable for boxes or cylindrical objects with porous or non porous surface. It consists of a robust aluminium casting, a drum-text for baselock types, an inking roller and some mechanical parts to adjust and position the drum. The rotary marker "Rollerpack" can be fitted on the left or right side of the conveyor belt.

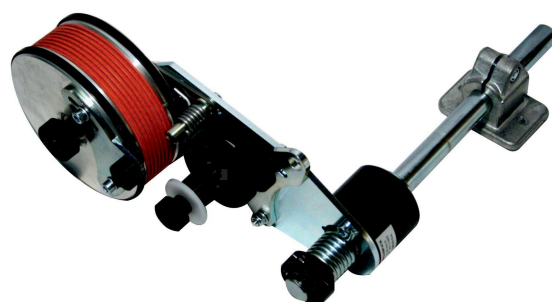
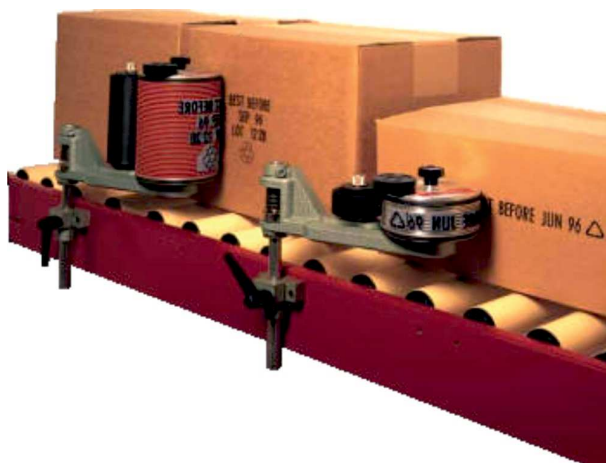
Marking unit "Rollerpack" – How to use?

Very often, our roller coders are mounted inside a case sealer. The drive types on the drum-type are driven by the product passing. A 360° cam registers the print on each product. The mounting arm allows the print position to be adjusted and the print pressure to be varied. Especially for light weight cartons, this adjustment is necessary. The Codapack printer can be mounted for left or right hand printing.

Marking unit "Rollerpack" - Availability

Our contact coder "Rollerpack" is available in 3 sizes with different marking heights:

- Model 430-25: 430 x 25 mm
marking length: 360 mm - marking width: 25 mm
- Model 430-50: 430 x 50 mm
marking length: 360 mm - marking width: 50 mm
- Model 430-100: 430 x 100 mm
marking length: 360 mm - marking width: 100 mm



Advantages

Though contact coding has the reputation to be out of time, our contact coders and marking printers are still widely used around the world. For many reasons.

The main advantages are:

- Very cost effective solution
- Easy to install and handle
- Almost no maintenance necessary
- Imprint can be changed quickly due to the baselock rubber types TELOS
- Suitable for porous and non-porous materials

