

Interchangeable steel type

Steel types or also called interchangeable steel types are sharp faced marking stamps which mark a readable imprint in metal and plastic components. Each steel type has standardized blanks which suit perfectly into hand holders and holders for marking presses.

Marking with steel types and holders saves time – in just one stroke, a series of letters and figures can be indented in a product or name plate with uniform legibility. This is the most simple solution for multi-character marking using standard, off the shelf type and holders. Our steel types are available in various versions, each with their own blank size.

Our steel types are available as single pieces in different versions and sizes as well as complete fount sets of 100 assorted types with or without hand holder. The size of the characters may vary from 1.5 to 10.0 mm, special fonts (Cyrillic...), special dimensions and special character size above 10.0 mm are made after drawing or after sample.

Our steel types fit into type holders, which are designed to provide accurate type location and positive locking combined with ease of use and durability. The type is secured in place by means of a grub screw (Allen key supplied). Those holders accept the range of Pryor types, Imperial types and Euro types and are available in various sizes with various capacities.

The steel types of the brand PRYOR are made out of high-quality Sheffield tool steel and are hardened under exact conditions to 59-63 of Rockwell "C".

On customer demand, we also manufacture all kinds of custom engraved dies and special types like logo stamps, symbol stamp (f.e.: CE signs), block types or segmental types.

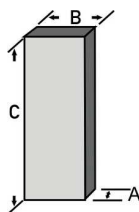
PRYOR Stahltypen - Abmessungen

According to the character size, each blanks have different, normed dimensions. Beside our standard range, PRYOR priority and imperial steel types, our range comprises additional brands like EURO-types or types TH-100 and THS-100.

Please find the exact dimensions of each blank in our table bellow.

Please note, that the character size must be measured on top of the engraving.

Ausführung: scharfkantig
Ergebnis: lesbar, vertieft



Steel type marking



Advantages

- Simple solution for multi-character marking
- Standard blanks for comfortable replacements
- Suitably for most industrial applications
- Economic and favourable marking
- Easy to handle
- Steel types can be re-ordered in piecewise
- Production is certificated after ISO 9001:2000
- Steel types piecewise or in sets to 100 pieces with or without hand holders available
- Steel type set are shipped in a robust plastic box with compartments for each types
- Any custom made engraved types possible

Applications

- Marking of identification labels
- Manual marking of profiles, work pieces, components
- Also useable in assembly lines (car industry, investment construction)
- Marking of production loads
- **Fuctional marking:**
marking of gauges, micrometers, drilling machines, depth rods
- **Identification marking:**
marking of part numbers, selection data, assay marks
- **Traceability marking**
- **Legislative marking:**
marking of patent number, voltage, country of origin

	PRIORITY			IMPERIAL			EURO-TYPE			TH-100			THS-100		
Size	A	B	C	A	B	C	A	B	C	A	B	C	A	B	C
1,00	1,60	3,20	15,87	1,60	6,40	22,20	1,50	4,00	19,00	-	-	-	-	-	-
1,50	1,60	3,20	15,87	1,60	6,40	22,20	1,50	4,00	19,00	-	-	-	-	-	-
2,00	2,00	6,40	19,05	2,00	6,40	22,20	2,00	4,00	19,00	2,00	4,00	15,0	3,00	6,00	32,00
2,50	2,50	6,40	19,05	2,50	6,40	22,20	2,50	6,00	19,00	-	-	-	-	-	-
3,00	3,20	6,40	19,05	3,20	6,40	22,20	3,00	6,00	19,00	3,00	6,00	20,00	3,00	6,00	32,00
4,00	4,00	8,00	19,05	4,00	8,00	22,20	4,00	8,00	19,00	3,00	6,00	20,00	4,00	8,00	32,00
5,00	4,80	8,00	19,05	4,80	8,00	22,20	5,00	8,00	19,00	4,00	8,00	25,00	4,00	8,00	32,00
6,00	6,40	9,50	19,05	6,40	9,50	19,05	-	-	-	4,00	8,00	25,00	5,00	10,00	32,00
8,00	-	-	-	-	-	-	-	-	-	5,00	10,00	25,00	5,00	10,00	32,00
10,00	9,50	16,00	25,40	9,50	16,00	25,40	-	-	-	6,00	12,00	30,00	6,00	12,00	32,00
12,00	-	-	-	-	-	-	-	-	-	8,00	15,00	30,00	8,00	15,00	32,00
15,00	-	-	-	-	-	-	-	-	-	10,00	20,00	30,00	10,00	20,00	32,00

Interchangeable steel type

PRYOR Steel type fount sets

Fount sets of the brand PRYOR – Priority are marking tools for various applications in the industry. One set comprises 100 assorted steel types PRYOR – Priority as well as 12/6 spacers (depending on the size of the character). The number of each single type corresponds to the average expected frequency of a usual standard industrial company. A fount set can be delivered with or without the corresponding type holder offering more flexibility to the customer.

Steel types of the brand PRYOR – PRIORITY are high quality marking tools for many different applications in the industry. Each steel type is made exactly out of high-quality chrome steel with standardized blank dimensions. To each size, a suitable hand holder is available from stock. All standard stamps are nickel-plated and protected therefore against rust.

Each fount set comprises 100 pcs assorted steel types (A-Z, 0-9, punctuation marks) as well as 6 or 12 pieces of spacers. The types are packed in a strong plastic or wooden box with compartments for each single type.

PRYOR interchangeable steel types - low stress

Steel types of the brand PRYOR – LOW STRESS are high quality marking tools for special applications in the industry. Each steel type is made exactly out of high-quality chrome steel with standardized blank dimensions. To each size, a suitable hand holder is available from stock. In contrast to the standard steel types PRIORITY, low stress steel types are engraved with a round faced character to reduce the stress levels introduced into the component being marked. These marking tools are produced especially for the oil and gas industry as well as in the aircraft industry and for power plants and similar applications.

Engraving: rounded nose
Result: readable



PRYOR interchangeable steel types - dot stress

Steel types of the brand PRYOR – DOT STRESS are high quality marking tools for special applications in the industry. Each steel type is made exactly out of high-quality chrome steel with standardized blank dimensions. To each size, a suitable hand holder is available from stock. All standard stamps are nickel-plated and protected therefore against rust. In contrast to the standard steel types PRIORITY, dot stress steel types are engraved with a round faced character to reduce the stress levels introduced into the component being marked.

The variation "dot stress" introduces even lower stress levels than the steel types "low stress" and enhance fatigue properties. Marking stamps "dot stress" produce a character with similar rounded nose formation to low stress but with the added benefit of impressing the character in a dot formation. Please see the difference on the following illustration.

These marking tools are produced especially for the oil and gas industry as well as in the aircraft industry and for power plants and similar applications.

As a distributor of the company PRYOR we can always deliver all letters, figures, as well as the most important punctuation marks in all available sizes in 3.0 and 5.0 mm from stock. Custom made engraving types with individual logos, letterings or symbols can be supplied after drawing or sample.

Ausführung: Radius
Ergebnis: lesbar, vertieft



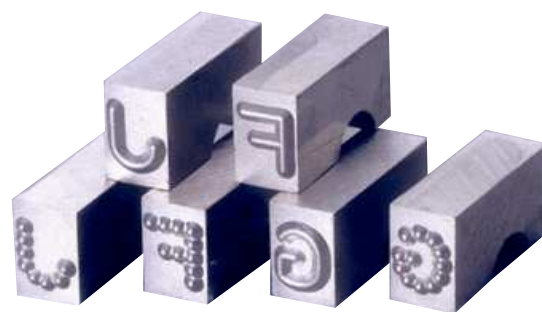
Steel type marking



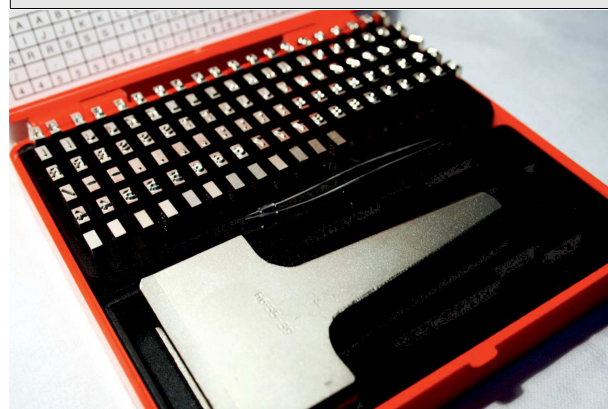
Content PRYOR Fount set



Steel types - low stress and dot stress



Fount set with holder



Interchangeable steel type

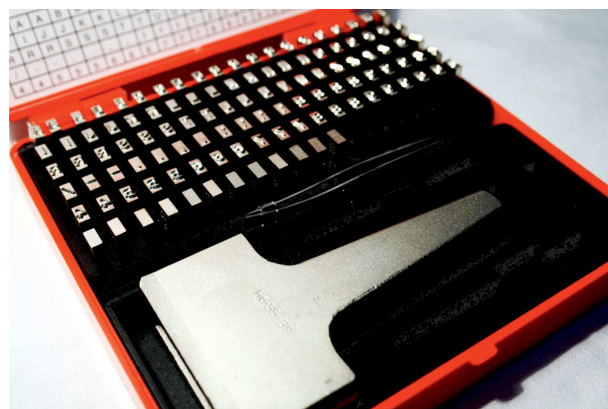
Steel Type EUR - EURO Norm

Beside the Pryor Priority and Imperial steel types, our range comprises also various other standard blanks. One important blank size is the EURO-Norm steel types with metric measures. These steel types are available in various sizes from 1.0 to 5.0 mm and are also available from stock.

EURO blanks Character size	Width A	Height B	Length C
1.0 mm	1,5	4,0	19,0
1.5 mm	1,5	4,0	19,0
2.0 mm	2,0	4,0	19,0
2.5 mm	2,5	6,0	19,0
3.0 mm	3,0	6,0	19,0
4.0 mm	4,0	8,0	19,0
5.0 mm	5,0	8,0	19,0

Steel Type TH-100 and TH-200 blanks

Another blank size are our blanks TH-100 and TH-200. These blanks are mainly used in Germany for various marking applications. A lot of typeholders and customized type holders are available for these blanks for hand / hammer or press marking.



Steel type marking

TH-100 / TH-200 Character size	Width A	Height B	Length C
2.0 mm	2,0	4,0	15,0
3.0 mm	3,0	6,0	20,0
4.0 mm	3,0	6,0	20,0
5.0 mm	4,0	8,0	25,0
6.0 mm	4,0	8,0	25,0
8.0 mm	5,0	10,0	25,0
10.0 mm	6,0	12,0	30,0
12.0 mm	8,0	15,0	30,0
15.0 mm	10,0	20,0	30,0

Steel Type THS-100 and THS-200 blanks

Another blank size are our blanks THS-100 and THS-200. These blanks are mainly used in Germany for various marking applications. These types have an additional groove for an even higher security level. A lot of typeholders and customized type holders are available for these blanks for hand / hammer or press marking.

THS-100 / THS-200 Character size	Width A	Height B	Length C
2.0 mm	3,0	6,0	32,0
3.0 mm	3,0	6,0	32,0
4.0 mm	4,0	8,0	32,0
5.0 mm	4,0	8,0	32,0
6.0 mm	5,0	10,0	32,0
8.0 mm	5,0	10,0	32,0
10.0 mm	6,0	12,0	32,0
12.0 mm	8,0	15,0	32,0
15.0 mm	10,0	20,0	32,0

Manual type holder

PRYOR manual type holder

Type Holders for use with PRYOR steel type are available for use by hand and hammer application. In addition, special machine holders are available for press marking for even faster throughput.

Each style offers a wide choice of one and multi-line options with various capacities to suit all type sizes. Type holders are designed to provide accurate type location and positive locking combined with ease of use and durability. Hand holders for the larger type size of 6.0 and 10.0 mm are designed with a retaining pin that fits through the groove in the steel type piece for added user security.

The steel type is secured in place by means of a grub screw (allen key supplied).

For a higher security level, an extended handle keeps the hammer a safe distance away from the fingers of the user and also assists the user to make a more controlled and confident strike for a good quality mark.

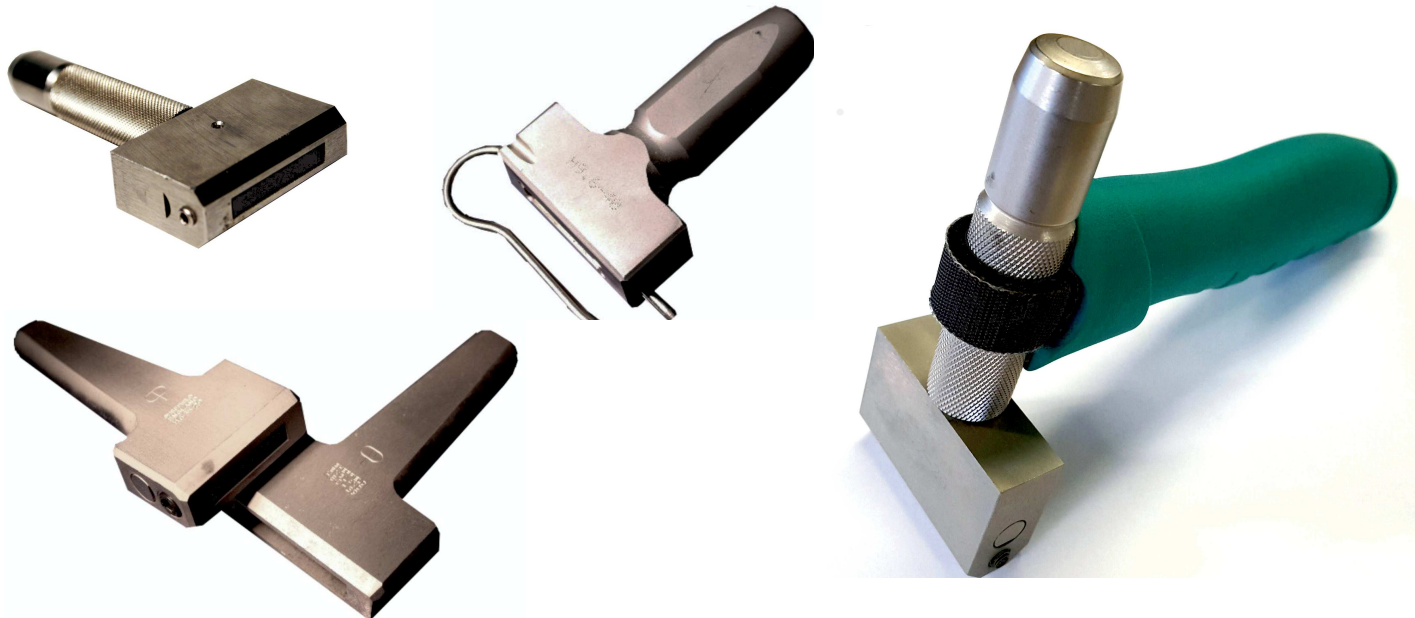


Steel type marking

PRYOR Type Holder - available sizes

Holder	Slot size (mm)		Maximum number of type pieces							
	A	B	1.5 mm	2.0 mm	2.5 mm	3.0 mm	4.0 mm	5.0 mm	6.0 mm	10.0 mm
H 3.2 - 20	3.2	20	12							
H 6.35 - 29	6.35	29	18 + 18	14	12	9				
H 6.35 - 39	6.35	30	18 + 18	19	16	12				
H 8.0 - 39	8.0	39					9	8		
H 9.6 - 40	9.6	40							6	
H 16 - 57	16.0	57								6

Holder	Slot size (mm)		Maximum number of type pieces							
	A	B	1.5 mm	2.0 mm	2.5 mm	3.0 mm	4.0 mm	5.0 mm	6.0 mm	10.0 mm
H 6.35 - 29	6.35	29	18	15	12	9	7	6		
H 6.35 - 39	6.35	30	24	18	16	12	9	8		
H 8.0 - 39	8.0	39					9	8		
H 9.6 - 40	9.6	40							6	
H 16 - 57	16.0	57								6



Manual type holder

Type Holder - Euro Norm

For all EURO Type blanks we also have a wide variety of type holders available. These type holders are available with a handle for hammer / hand use or with a shank for press marking.

Please check our range of type holders for EURO blank below.

Steel type marking



	Width	Height	Length	Slot	Types per Line					
					1.0 / 1.5 mm	2.0 mm	2.5 mm	3.0 mm	4.0 mm	5.0 mm
H40014	20	25	40	14	9	7				
H40020	20	35	40	20	13	10				
H40030	20	50	40	30	20	15				
H40050	20	70	40	50	33	25				
H40080	20	100	40	80	53	40				
H40030-2	20	50	40	2 x 30	20	15				
H40050-2	20	70	40	2 x 50	33	25				
H40040	30	60	50	3 x 40	26	20				
H60020	20	35	40	20			8	6		
H60040	20	55	40	40			16	13		
H60060	20	80	40	60			24	20		
H60080	20	100	40	80			32	26		
H60040-2	30	55	50	2 x 40			16	13		
H60080-2	30	100	50	2 x 80			32	26		
H60040-3	35	60	50	3 x 40			16	13		
H60050-3	35	70	55	3 x 50			20	16		
H60060-3	35	80	50	3 x 60			24	20		
H60080-3	35	100	50	3 x 80			32	26		
H80020	20	36	40	20					5	4
H80040	20	60	40	40					10	8
H80060	20	80	40	60					15	12
H80080	20	100	40	80					20	16
H80040-2	30	60	50	2 x 40					10	8
H80060-2	30	80	50	2 x 60					15	12
H80080-2	30	100	50	2 x 80					20	16
H80040-3	40	60	60	3 x 40					10	8
H80050-3	40	70	60	3 x 50					12	10
H80080-3	40	100	60	3 x 80					20	16

Manual type holder

Type Holder - TH-100

The TH-100 holder is the standard holder for steel types TH-100 blanks. This holder is chemically nickel-plated and is suitable for manual applications with hammer stroke.

We offer this holder for any size from 2.0 to 15.0 mm with the number of digits according to your choice.

Suitable for all non-ferrous metals, steelworks, foundries, pipes, metalworking, toolmaking and many more.

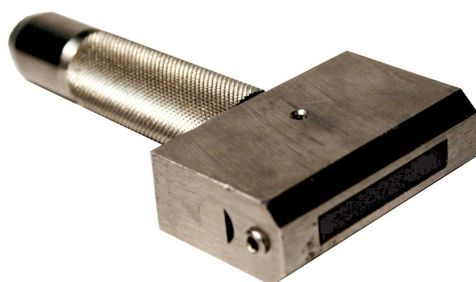
Type Holder - THS-100

The type holder THS-100 is a heavy duty holder available for steel types THS-100 in various sizes from 1.0 to 15.0 mm. Due to its with a heavy striking cap and its solid construction, this holder is suitable for all non-ferrous metals, steelworks, metalworking, pipes, joining technology and many more. All THS-100 holders are chemically nickel-plated.

In contrast to the holder TH-100, this holder offers an additional pin-locking mechanism for grooved steel types for a higher security level.

We offer this holder for any number of digits according to your choice.

Steel type marking



Machine type holder

In contrast to manual type holders, machines type holders are designed for press marking. A special shank connects the body of the machine holder with the marking press. In order to fit your press, this shank can be customized to your requirements. Standard sizes are 8, 10, 16 or 20 mm diameter.

Machine holders are available for any kind of marking types. These holders have various advantages compared to the manual operated type holders. For example, the striking power can be adjusted more precisely with a marking press. Another advantage is, that the capacity of a machine holder is enhanced which allows you to mark more letters and figures in one single stroke. Hence, machine holders are mostly used for longer text combinations or figure combinations.

Machine holders can also be custom made to your requirements according to your components drawing.

Steel type marking



PRYOR Type holder - Measures

Various different machine holders are available for our marking steel types Priority and Imperial. The dimension of the body and the marking capacity of the single holders usually fit most of the industrial applications. Custom made type holders are also available on request.

Each type holders is supplied with a corresponding shank. The standard dimension of 10 mm diameter and a length of 40 mm can be modified to your requirements.

Holder	Slot size (mm)		Capacity						
	A	B	1.5 mm	2.0 mm	2.5 mm	3.0 mm	4.0 mm	5.0 mm	
PH 3.2-40	3.2	40	24						
PH 6.35-60	6.35	60		30	25	18			
PH 8.0-50	8.0	50					12	10	
H 8.0-40	8.0	40					10	8	
C02012O	6.35	29		14	12	9			
C02012P	6.35	39		19	16	12			
C02012Q	6.35	70		35	28	21			

PRYOR Type holder with dove-tail shank

All machine holders from the Priority range can be delivered with a dove tail shank. Using a holder with a dove tail eases the usage of machine holders, especially when the type holder has to be removed moreoften due to frequent changes of the steel types. In addition, this type of shank is necessary when the type holder has to be removed horizontal.

The following standard-machines type holders with dove tail are in our assortment:

Holder	Slot size (mm)		Capacity							
	A	B	1.5 mm	2.0 mm	2.5 mm	3.0 mm	4.0 mm	5.0 mm	6.0 mm	10.0 mm
DH 3.2-50	3.2	50	31							
DH 6.35-82	6.35	82		40	34	25				
DH 8.0-85	8.0	85					21	17		
DH 9.6-82	8.0	82							12	
DH 16.0-85	6.35	85								8

Advantages

- Suitable for all kinds of steel types (Priority, Imperial, Euro, TH-100, THS-100)
- Steel type is secured in place by a grub screw
- Large number of possible combinations
- High durability
- Custom made type holders
- Various shanks available
- Very suitable for roller marking
- Special type holders for circular arra



Machine type holder

Steel type marking

Type holder for EURO-type

For all EURO Type blanks we also have a wide variety of type holders available. These type holders are available with a handle for hammer / hand use or with a shank for press marking.

Please check our range of type holders for EURO blank below.

Type holder with multiple lines

In special manufacturing we can produce customized also multiline type holders for marking presses.

These type holders can also be manufactured for different character sizes in each line for even more flexibility.



	Width	Height	Length	Slot	Types per Line					
					1.0 / 1.5 mm	2.0 mm	2.5 mm	3.0 mm	4.0 mm	5.0 mm
H40014	20	25	40	14	9	7				
H40020	20	35	40	20	13	10				
H40030	20	50	40	30	20	15				
H40050	20	70	40	50	33	25				
H40080	20	100	40	80	53	40				
H40030-2	20	50	40	2 x 30	20	15				
H40050-2	20	70	40	2 x 50	33	25				
H40040	30	60	50	3 x 40	26	20				
H60020	20	35	40	20			8	6		
H60040	20	55	40	40			16	13		
H60060	20	80	40	60			24	20		
H60080	20	100	40	80			32	26		
H60040-2	30	55	50	2 x 40			16	13		
H60080-2	30	100	50	2 x 80			32	26		
H60040-3	35	60	50	3 x 40			16	13		
H60050-3	35	70	55	3 x 50			20	16		
H60060-3	35	80	50	3 x 60			24	20		
H60080-3	35	100	50	3 x 80			32	26		
H80020	20	36	40	20					5	4
H80040	20	60	40	40					10	8
H80060	20	80	40	60					15	12
H80080	20	100	40	80					20	16
H80040-2	30	60	50	2 x 40					10	8
H80060-2	30	80	50	2 x 60					15	12
H80080-2	30	100	50	2 x 80					20	16
H80040-3	40	60	60	3 x 40					10	8
H80050-3	40	70	60	3 x 50					12	10
H80080-3	40	100	60	3 x 80					20	16

Machine type holder

Type Holder - TH-200

The TH-200 holder is the standard holder for steel types TH-100 blanks. This holder is chemically nickel-plated and is suitable for manual applications with hammer stroke.

We offer this holder for any size from 2.0 to 15.0 mm with the number of digits according to your choice.

Suitable for all non-ferrous metals, steelworks, foundries, pipes, metalworking, toolmaking and many more.

Type Holder - THS-200

The type holder THS-200 is a heavy duty holder available for steel types THS-200 in various sizes from 1.0 to 15.0 mm. Due to its with a heavy striking cap and its solid construction, this holder is suitable for all non-ferrous metals, steelworks, metalworking, pipes, joining technology and many more. All THS-200 holders are chemically nickel-plated.

In contrast to the holder TH-200, this holder offers an additional pin-locking mechanism for grooved steel types for a higher security level.

We offer this holder for any number of digits according to your choice.

Shanks

Shanks are the common way to combine engraved dies, punches, typeholders and numbering heads to the marking machines. Our shanks are available in various sizes to suit the marking machine to which they have to be attached.

Custom made shanks can also be produced to the customers requirements. Beside the standard shanks, special shanks like dove-tails can be supplied as well.

Customized type holders

Beside our standard holders we also offer customized type holders in any size and with various options.

Possible customizations are:

- Two or more lines
- Variable line pitch
- Various character or blank sizes
- Combination of single and block stamps
- Logo engraving on the body or as exchangeable stamp
- Rapid exchange mechanism

For a quotation, please specify your demand as precise as possible.

Steel type marking

