

## [ Marking products ]

Standard hand stamps or punches are the cheapest variation to marking letter, figures, signs and symbols manually on plastic, metal, leather and other materials. At its simplest, the mark can be applied to the component by striking the punch by hammer.

Our steel stamps are made of high quality chrome steel and are hardened under exact conditions. In contrast to other punches no poor quality steel is used for these products. This leads to a long durability, a maximum in working security and an unbeatable cost/performance ratio. Hand stamps are available either in sets of A-Z or 0-9. Single stamps are also available in various sizes.

Our punches are available in different qualities. Beside the standard series "premium" we offer steel stamps also in revers, heavy duty "Goliath", with radius engraving "Low stress" and in dot/radius engraving "Dot stress". Our punches are available in many standard sizes from 1.0 to 12.5 mm. Additional we manufacture hand stamps in various sizes up to 50 mm size on demand.

Beside the standard sets A-Z and 0-9 we offer a wide range of custom made engraved dies and stamps including an artwork and design service for die inscriptions. The assortment includes also symbol stamps (CE-sign, ....), welder's inspection stamps, flymarks, logotype dies, graduation dies, cigarette printing die, round die, embossing die, coining die, roller die and coding dies.

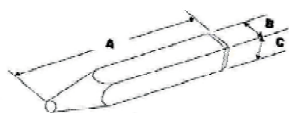
### PRYOR punch set "Premium"

Our punches "PREMIUM" are our standard marking stamp for general use. All punches have sharp faced characters and are available in various sizes. These stamps are ideal for a whole range of marking processes on anything from aluminium to stainless steel.

Our punches are manufactured of high quality Chromium tool steel. All stamps are hardened precisely, giving a hardness of 58-62 R.C. at the character end and 32-40 R.C. at the striking end. Please note, that the hardness of the component should not exceed 40 R.C.

All punch sets are delivered in a strong plastic box with separate compartments for each stamp to allow rapid selection. The production of our standard punches is certificated after ISO 9001:2000. For special security requirements there is a special security holder available.

Hand stamps of the series "Premium" are available as a single stamp as well as in sets of A-Z and 0-9 in different sizes. All standard punches are nickel-plated and protected therefore against rust.



Engraving: sharp faced  
Marking: readable



SH (mm)	Abmessung in mm			Verfügbarkeit		
	A	B	C	Einzel	Set 0-9	Set A-Z
1.0	63.5	6.35	6.35	✓	✓	✓
1.5	63.5	6.35	6.35	✓	✓	✓
2.0	63.5	6.35	6.35	✓	✓	✓
2.5	63.5	6.35	6.35	✓	✓	✓
3.0	63.5	6.35	6.35	✓	✓	✓
4.0	70.0	9.5	9.5	✓	✓	✓
5.0	70.0	9.5	9.5	✓	✓	✓
6.0	70.0	9.5	9.5	✓	✓	✓
8.0	89.0	12.7	12.7	✓	✓	✓
10.0	89.0	14.3	14.3	✓	✓	✓
12.5	89.0	19.0	19.0	✓	✓	✓

## Hand steel stamps - punches



### Advantages

- + Quality controlled Sheffield Chromium tool steel
- + Precise heat treatment (58 – 62 R.C.) at the character and 32-40 R.C. at the striking end.
- + Production is certificated - ISO 9001:2000
- + Stamp sets (A-Z, 0-9) are packed in a strong plastic box with separate compartments for each stamp to allow rapid selection
- + Nickel plated stamp Suitably for any industrial applications Wide range available
- + Standard and heavy duty for general use, reverse for mould and die applications, minstress and dotstress for low stress work
- + Special punch safety grip available
- + Favourable price - the cheapest way to mark your products Great cost/performance ratio



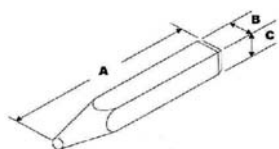
## [ Marking products ]

## Hand steel stamps - punches

### PRYOR punch set "Revers"

In contrast to the standard marking stamp "Premium", reverse punches are available for use when a negative impression is required, particularly in forging or moulding applications or to produce a positive or readable inscription on a moulded or cast component.

Our punches are manufactured of high quality Chromium tool steel. All stamps are hardened precisely, giving a hardness of 58-62 R.C. at the character end and 32-40 R.C. at the striking end. Please note, that the hardness of the component should not exceed 40 R.C.



Engraving: sharp faced  
Result: reverse



Size (mm)	Dimensions (mm)			Availability		
	A	B	C	Single	Set 0-9	Set A-Z
1.5	63.5	6.35	6.35	√	√	√
2.0	63.5	6.35	6.35	√	√	√
3.0	63.5	6.35	6.35	√	√	√
4.0	70.0	9.5	9.5	√	√	√
5.0	70.0	9.5	9.5	√	√	√
6.0	70.0	9.5	9.5	√	√	√

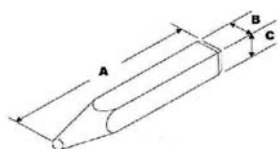


### PRYOR punch set "Goliath"

Our punch series "Goliath" is a marking tool for heavy duty applications. These steel stamps are produced on larger blanks than the standard ones giving the opportunity to mark with greater strength or when heavy use is required. The stamps of the series "Goliath" are made extra strong and can be also used for metals with a hardness up to 48 Rockwell 'C'.

Our punches are manufactured of f high quality Chromium tool steel. All stamps are hardened precisely, giving a hardness of 58-62 R.C. at the character end and 32-40 R.C. at the striking end. Please note, that the hardness of the component should not exceed 48 R.C.

All sets are delivered in a strong plastic box with separate compartments for each punch to allow rapid selection. The production of these stamps is certificated after ISO 9001:2000. For special security requirements there is a special security holder available.



Engraving: sharp faced  
Result: readable



SH (mm)	Abmessung in mm			Verfügbarkeit		
	A	B	C	Einzel	Set 0-9	Set A-Z
3.0	89	12.7	12.7	√	√	√
5.0	89	12.7	12.7	√	√	√
6.0	89	14.3	14.3	√	√	√
8.0	89	14.3	14.3	√	√	√
10.0	102	19.0	19.0	√	√	√
12.5	102	19.0	19.0	√	√	√

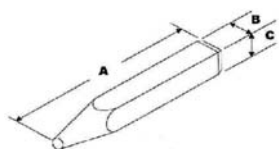
## [ Marking products ]

## Hand steel stamps - punches

### PRYOR punch set "Low stress"

Marking stamps "low stress" or also called "ministress punches" are specially engineered so that lower stress levels are introduced into the component being marked. These punches are used especially for the oil, gas and aircraft industry but also for power plants and similar applications. Instead of the sharp faced characters, these punches are manufactured with a radius engraving to reduce the stress levels. Please see the difference on the following illustration.

Our punches are manufactured of high quality Chromium tool steel. All stamps are hardened precisely, giving a hardness of 58-62 R.C. at the character end and 32-40 R.C. at the striking end. Please note, that the hardness of the component should not exceed 40 R.C.



Engraving: Rounded characters  
Result: readable



	Dimensions (mm)			Availability		
Size (mm)	A	B	C	Single	Set 0-9	Set A-Z
3.0	70	9.5	9.5	√	√	√
5.0	70	9.5	9.5	√	√	√
6.0	70	12.7	12.7	√	√	√



### PRYOR punch set "Dot stress"

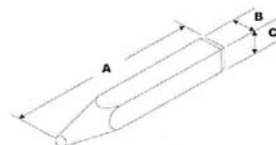
Marking stamps "dot stress" introduce even lower stress levels than the punch "low stress" and enhance fatigue properties. Punches "dot stress" produce a character with similar rounded nose formation to low stress with the added benefit of impressing the character in a dot formation.

Dot stress marking stamps are used especially in the oil, gas and aircraft industry but also for power plants and similar applications. Instead of the sharp faced characters, these punches are manufactured with a radius engraving to reduce the stress levels. Please see the difference on the following illustration.

Marking stamps of the series "dot stress" are available as single punch as well as in sets of A-Z and 0-9 in different sizes. All standard stamps are nickel-plated and protected therefore against rust.

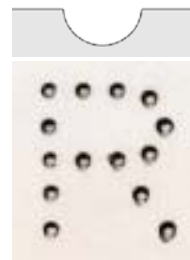
Our steel stamps are manufactured of high quality Chromium tool steel. All punches are hardened precisely, giving a hardness of 58-62 R.C. at the character end and 32-40 R.C. at the striking end. Please note, that the hardness of the component should not exceed 40 R.C.

All sets are delivered in a strong plastic box with separate compartments for each stamp, to allow rapid selection. The production of these stamps is certificated after ISO 9001:2000. For special security requirements there is a special security holder available.



Ausführung: Radius  
Ergebnis: lesbar, vertieft

	Dimensions (mm)			Availability		
Size (mm)	A	B	C	Single	Set 0-9	Set A-Z
3.0	70	9.5	9.5	√	√	√
5.0	70	9.5	9.5	√	√	√
6.0	70	12.7	12.7	√	√	√
8.0	70	12.7	12.7	√	√	√





## [ Marking products ]

## Hand steel stamps - punches

### Custom made punches

For individual marking solutions, our engravings department manufactures custom made engraved dies of high quality tool steels (f.e.: 1.1545, 1.2842, 1.2379). These marking stamps are engraved exactly to your requirements and component drawings. Our stamps are engraved precisely to your applications regarding material and hardness to reach an optimum of indenting results and durability.

### Welders' inspection punch

Inspection stamps are special marking tools for quality assurance marking as well as for traceability marking. These stamps can be manufactured in different sizes and layouts. In most cases, a welder's inspection punch comprises of a letter/figure combination, sometimes within a circle, a star symbol or a rectangular.

Usually these stamps are manufactured with a rectangular blank, however, inspection stamps can also be produced with a round body.

Please find some illustrations of a typical inspector punch:



### Custom made engraved punches

Beside the single character punch, punches can also be manufactured comprising more letters/figures/symbols in one stamp only. These custom made marking stamps allow marking of more than one character with one single stroke, which increases the productivity.

Custom made steel stamps are often used when company logos or fixed letter/figure combinations must be marked in mass production. In contrast to a single steel stamp, whole words or number codes can be marked therefore with a single stroke. Saving time and a better marking quality are two convincing arguments!

### Press style custom steel stamps

These custom steel stamps are special marking tools with a shank to fit virtually all marking presses. Press dies with shank are usually used for mass-production or serial-production, either with a single percussion press or within an assembly line. The shank, which can also be customized, serves as the connection between the marking die and the marking press. In addition, special shanks for rapid changes of the marking die are available.

The possible applications are countless, custom made engraved steel stamps are used in all parts of the industrial production processes. We manufacture press style custom steel stamps either after drawing or after your sample.

### Roller die - Cigarette printing die

Roller dies and cigarette printing dies are special marking tools used in assembly lines. Either presses or roller marking machines can be used to apply pressure to the dies and mark the component. Roller dies can be manufactured either in brass or in steel, depending on the application.

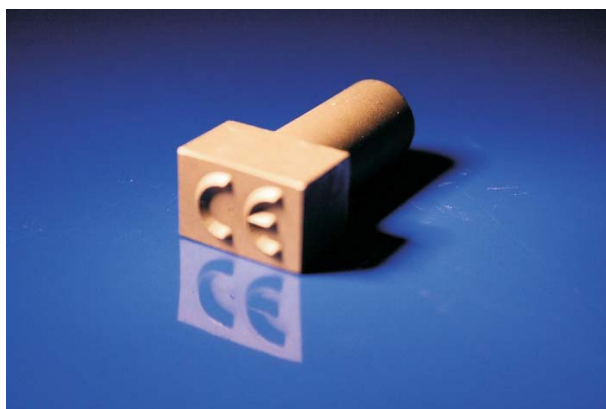
These marking tools are exclusively custom made, a detailed engineering drawing is needed for the production.



### Custom made punches can be:

- Machine stamp
- Welder's stamp, welder's inspection stamp
- Fly mark
- Jewellery stamp, ring stamp
- Logotype die, Logotype punch
- Round die, embossing die
- Roller die
- Coding type
- Cigarette printing die

### Samples



## [ Marking products ]

Steel types or also called interchangeable steel types are sharp faced marking stamps which mark a readable imprint in metal and plastic components. Each steel type has standardized blanks which suit perfectly into hand holders and holders for marking presses.

Marking with steel types and holders saves time – in just one stroke, a series of letters and figures can be indented in a product or name plate with uniform legibility. This is the most simple solution for multi-character marking using standard, off the shelf type and holders. Our steel types are available in various versions, each with their own blank size.

Our steel types are available as single pieces in different versions and sizes as well as complete fount sets of 100 assorted types with or without hand holder. The size of the characters may vary from 1.5 to 10.0 mm, special fonts (Cyrillic...), special dimensions and special character size above 10.0 mm are made after drawing or after sample.

Our steel types fit into type holders, which are designed to provide accurate type location and positive locking combined with ease of use and durability. The type is secured in place by means of a grub screw (Allen key supplied). Those holders accept the range of Pryor types, Imperial types and Euro types and are available in various sizes with various capacities.

The steel types of the brand PRYOR are made out of high-quality Sheffield tool steel and are hardened under exact conditions to 59-63 of Rockwell "C".

On customer demand, we also manufacture all kinds of custom engraved dies and special types like logo stamps, symbol stamp (f.e.: CE signs), block types or segmental types.

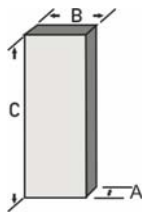
### PRYOR Stahltypen - Abmessungen

According to the character size, each blanks have different, normed dimensions. Beside our standard range, PRYOR priority and imperial steel types, our range comprises additional brands like EURO-types or types TH-100 and THS-100.

Please find the exact dimensions of each blank in our table bellow.

Please note, that the character size must be measured on top of the engraving.

Ausführung: scharfkantig  
Ergebnis: lesbar, vertieft



## Interchangeable steel types



### Advantages

- Simple solution for multi-character marking
- Standard blanks for comfortable replacements
- Suitably for most industrial applications
- Economic and favourable marking
- Easy to handle
- Steel types can be re-ordered in piecewise
- Production is certificated after ISO 9001:2000
- Steel types piecewise or in sets to 100 pieces with or without hand holders available
- Steel type set are shipped in a robust plastic box with compartments for each types
- Any custom made engraved types possible

### Applications

- Marking of identification labels
- Manual marking of profiles, work pieces, components
- Also useable in assembly lines (car industry, investment construction)
- Marking of production loads
- **Fuctional marking:**  
marking of gauges, micrometers, drilling machines, depth rods
- **Identification marking:**  
marking of part numbers, selection data, assay marks
- **Traceability marking**
- **Legislative marking:**  
marking of patent number, voltage, country of origin

	PRIORITY			IMPERIAL			EURO-TYPE			TH-100			THS-100		
Size	A	B	C	A	B	C	A	B	C	A	B	C	A	B	C
1,00	1,60	3,20	15,87	1,60	6,40	22,20	1,50	4,00	19,00	-	-	-	-	-	-
1,50	1,60	3,20	15,87	1,60	6,40	22,20	1,50	4,00	19,00	-	-	-	-	-	-
2,00	2,00	6,40	19,05	2,00	6,40	22,20	2,00	4,00	19,00	2,00	4,00	15,0	3,00	6,00	32,00
2,50	2,50	6,40	19,05	2,50	6,40	22,20	2,50	6,00	19,00	-	-	-	-	-	-
3,00	3,20	6,40	19,05	3,20	6,40	22,20	3,00	6,00	19,00	3,00	6,00	20,00	3,00	6,00	32,00
4,00	4,00	8,00	19,05	4,00	8,00	22,20	4,00	8,00	19,00	3,00	6,00	20,00	4,00	8,00	32,00
5,00	4,80	8,00	19,05	4,80	8,00	22,20	5,00	8,00	19,00	4,00	8,00	25,00	4,00	8,00	32,00
6,00	6,40	9,50	19,05	6,40	9,50	19,05	-	-	-	4,00	8,00	25,00	5,00	10,00	32,00
8,00	-	-	-	-	-	-	-	-	-	5,00	10,00	25,00	5,00	10,00	32,00
10,00	9,50	16,00	25,40	9,50	16,00	25,40	-	-	-	6,00	12,00	30,00	6,00	12,00	32,00
12,00	-	-	-	-	-	-	-	-	-	8,00	15,00	30,00	8,00	15,00	32,00
15,00	-	-	-	-	-	-	-	-	-	10,00	20,00	30,00	10,00	20,00	32,00

## [ Marking products ]

### PRYOR Steel type fount sets

Fount sets of the brand PRYOR – Priority are marking tools for various applications in the industry. One set comprises 100 assorted steel types PRYOR – Priority as well as 12/6 spacers (depending on the size of the character). The number of each single type corresponds to the average expected frequency of a usual standard industrial company. A fount set can be delivered with or without the corresponding type holder offering more flexibility to the customer.

Steel types of the brand PRYOR – PRIORITY are high quality marking tools for many different applications in the industry. Each steel type is made exactly out of high-quality chrome steel with standardized blank dimensions. To each size, a suitable hand holder is available from stock. All standard stamps are nickel-plated and protected therefore against rust.

Each fount set comprises 100 pcs assorted steel types (A-Z, 0-9, punctuation marks) as well as 6 or 12 pieces of spacers. The types are packed in a strong plastic or wooden box with compartments for each single type.

### PRYOR interchangeable steel types - low stress

Steel types of the brand PRYOR – LOW STRESS are high quality marking tools for special applications in the industry. Each steel type is made exactly out of high-quality chrome steel with standardized blank dimensions. To each size, a suitable hand holder is available from stock. All standard stamps are nickel-plated and protected therefore against rust. In contrast to the standard steel types PRIORITY, low stress steel types are engraved with a round faced character to reduce the stress levels introduced into the component being marked. These marking tools are produced especially for the oil and gas industry as well as in the aircraft industry and for power plants and similar applications.

Engraving: rounded nose  
Result: readable



### PRYOR interchangeable steel types - dot stress

Steel types of the brand PRYOR – DOT STRESS are high quality marking tools for special applications in the industry. Each steel type is made exactly out of high-quality chrome steel with standardized blank dimensions. To each size, a suitable hand holder is available from stock. All standard stamps are nickel-plated and protected therefore against rust. In contrast to the standard steel types PRIORITY, dot stress steel types are engraved with a round faced character to reduce the stress levels introduced into the component being marked.

The variation "dot stress" introduces even lower stress levels than the steel types "low stress" and enhance fatigue properties. Marking stamps "dot stress" produce a character with similar rounded nose formation to low stress but with the added benefit of impressing the character in a dot formation. Please see the difference on the following illustration.

These marking tools are produced especially for the oil and gas industry as well as in the aircraft industry and for power plants and similar applications.

As a distributor of the company PRYOR we can always deliver all letters, figures, as well as the most important punctuation marks in all available sizes in 3.0 and 5.0 mm from stock. Custom made engraving types with individual logos, letterings or symbols can be supplied after drawing or sample.

Ausführung: Radius  
Ergebnis: lesbar, vertieft



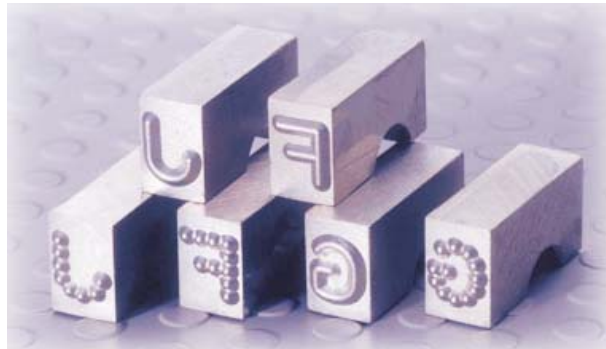
## Interchangeable steel types



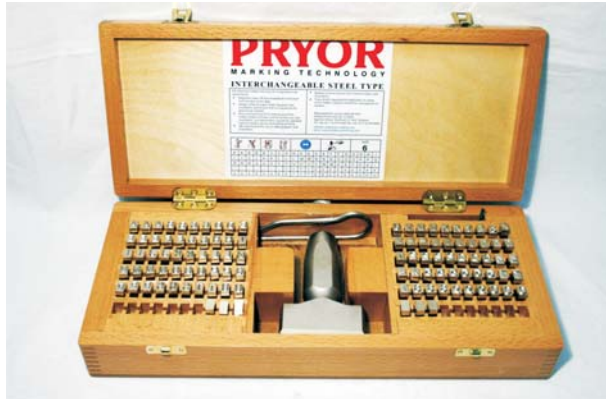
### Content PRYOR Fount set



### Steel types - low stress and dot stress



### Fount set with holder





## [ Marking products ]

### Manual type holder

Manual type holders are always used in combination with steel types and are designed to achieve an optimum marking result.

Type holders are designed to provide accurate type location and positive locking combined with ease of use and durability. The type is secured in place by means of a grub screw (Allen key supplied). The holder can also be fitted with a spring clip for extra security. This is necessary, especially for larger character sizes.

According to the size and the holder used, a certain number of steel marking types can be combined in the holder. The grub screw permits a quick exchange of the single types.

In our range you will find hand holders for all different variations of steel types (Priority, Imperial, Euro, TH-100) for numerous character sizes. Beside the standard hand holder, type holders can also be produced to your needs. Here, special requirements can be taken into consideration like impression lengths or multiline type holders.

#### PRYOR Type holder - dimensions and capacity

Type holders for PRYOR interchangeable steel types are manufactured to fit our PRYOR steel types.

The maximum number of type pieces corresponds to experience in the industry and is suitable for most industrial applications.

Slot size and capacity of each holder are:

Holder	Slot size (mm)		Maximum number of type pieces							
	A	B	1.5 mm	2.0 mm	2.5 mm	3.0 mm	4.0 mm	5.0 mm	6.0 mm	10.0 mm
H 3.2 - 20	3.2	20	12							
H 6.35 - 29	6.35	29	18 + 18	14	12	9				
H 6.35 - 39	6.35	30	18 + 18	19	16	12				
H 8.0 - 39	8.0	39					9	8		
H 9.6 - 40	9.6	40							6	
H 16 - 57	16.0	57								6

Holder	Slot size (mm)		Maximum number of type pieces							
	A	B	1.5 mm	2.0 mm	2.5 mm	3.0 mm	4.0 mm	5.0 mm	6.0 mm	10.0 mm
H 6.35 - 29	6.35	29	18	15	12	9	7	6		
H 6.35 - 39	6.35	30	24	18	16	12	9	8		
H 8.0 - 39	8.0	39					9	8		
H 9.6 - 40	9.6	40							6	
H 16 - 57	16.0	57								6

#### PRYOR Type holder - custom made holder

In special manufacturing, type holders for PRYOR interchangeable steel types can be produced exactly to your requirements.

Additional, these manual type holders can also be made for special types like T-types or L-types.



#### Advantages

- Precise for all steel types
- Quick exchange of the types
- Multiple character marking at low cost
- Different character sizes in only one holder
- High durability
- High flexibility
- Custom made type holders possible



## [ Marking products ]

### Manual type holder

#### Typenhalter - Euro-Type

Beside our standard range "PRYOR", we also offer type holders for other blank sizes.

Please note, that EURO steel types in 4 and 5 mm character size can also be used in our standard PRYOR holders.

EURO Holders have the following dimensions.

Holder	Slot size (mm)		Capacity "EURO-type"					
	A	B	1.5 mm	2.0 mm	2.5 mm	3.0 mm	4.0 mm	5.0 mm
H 4.0 - 29	4.0	29	19	14				
H 6.0 - 39	6.0	39			15	13		
H 8.0 - 40	8.0	40					10	8



#### Type holder - TH-100 (200) & THS-100 (200)

Type holders for the steel types TH-100 and THS-100 are very flexible. For every character size, the capacity of the holder can be adapted to your requirements. Additionally, for heavy-duty applications our hand holders THS-100 are also fitted with a spring clip for extra security.

Custom made type holders can also be produced exactly according to your components drawing.

#### Samples:



#### Multi-line type holder

For any kind of steel type, we can manufacture custom made type holders also as multiline type holders. With this special holder, two or more lines can be marked with one single stroke only.

Please take into consideration, that the manual use of multiline type holders depends strongly on size and number of letters as well as on the material you want to indent. Due to the limitation of the manual striking power, a multiline press holder in combination with a percussion press is recommended for some multiline marking applications.

#### Type holder for segment types

Our roller typeholder for use with conical types can take either one or two lines of types. This special holder can be used either with our roller marking machines or for special purpose applications to mark flat or round components. However, this type holder employs only the roller marking technique.

This system is of particular use for marking fragile components or very hard parts with all the force concentrated on a single character.

#### Circular type holder

This kind of the type holder is designed to mark in a circle on flat components. These holders are only manufactured on customer requirements. The dimensions (diameter, character size, number of characters) depend upon the needs of the customer.

These type holders are used primarily for test sign for the layer company.





## [ Marking products ]

## type holder for marking press

Machines type holders are constructed for the use in a marking press. A special shank connects the body of the machine holder with the marking press. This shank can be custom made to fit your marking press, which can be either hand operated, air operated or hydro-pneumatic models.

Machine holders are available for any kind of marking types. These holders have various advantages compared to the manual operated type holders. For example, the striking power can be adjusted more precisely with a marking press. Another advantage is, that the capacity of a machine holder is enhanced which allows you to mark more letters and figures in one single stroke. Hence, machine holders are mostly used for longer text combinations or figure combinations.

Machine holders can also be custom made to your requirements according to your components drawing.



### PRYOR Type holder - Measures

Various different machine holders are available for our marking steel types Priority and Imperial. The dimension of the body and the marking capacity of the single holders usually fit most of the industrial applications. Custom made type holders are also available on request.

Each type holders is supplied with a corresponding shank. The standard dimension of 10 mm diameter and a length of 40 mm can be modified to your requirements.

Holder	Slot size (mm)		Capacity						
	A	B	1.5 mm	2.0 mm	2.5 mm	3.0 mm	4.0 mm	5.0 mm	
PH 3.2-40	3.2	40	24						
PH 6.35-60	6.35	60		30	25	18			
PH 8.0-50	8.0	50					12	10	
H 8.0-40	8.0	40					10	8	
C02012O	6.35	29		14	12	9			
C02012P	6.35	39		19	16	12			
C02012Q	6.35	70		35	28	21			

### PRYOR Type holder with dove-tail shank

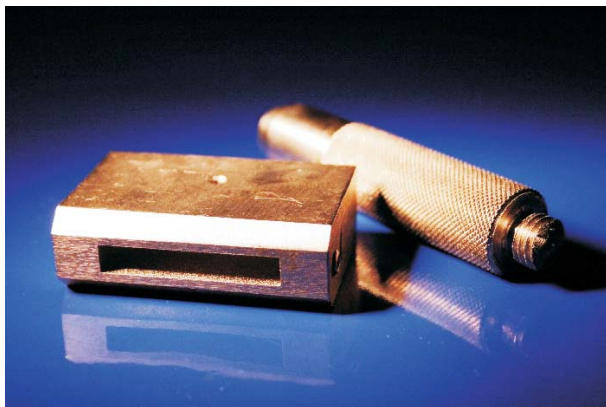
All machine holders from the Priority range can be delivered with a dove tail shank. Using a holder with a dove tail eases the usage of machine holders, especially when the type holder has to be removed moreoften due to frequent changes of the steel types. In addition, this type of shank is necessary when the type holder has to be removed horizontal.

The following standard-machines type holders with dove tail are in our assortment:

Holder	Slot size (mm)		Capacity							
	A	B	1.5 mm	2.0 mm	2.5 mm	3.0 mm	4.0 mm	5.0 mm	6.0 mm	10.0 mm
DH 3.2-50	3.2	50	31							
DH 6.35-82	6.35	82		40	34	25				
DH 8.0-85	8.0	85					21	17		
DH 9.6-82	8.0	82							12	
DH 16.0-85	6.35	85								8

### Advantages

- Suitable for all kinds of steel types (Priority, Imperial, Euro, TH-100, THS-100)
- Steel type is secured in place by a grub screw
- Large number of possible combinations
- High durability
- Custom made type holders
- Various shanks available
- Very suitable for roller marking
- Special type holders for circular arra



## [ Marking stamp ]

### Type holder for marking presses

According to your special applications, we can also manufacture customized type holders for marking presses as well. These holders can be customized in size, slot size, character size and so on.

Special shanks can also be manufactured to your requirements.

### Type holder with multiple lines

In special manufacturing we can produce customized also multiline type holders for marking presses.

These type holders can also be manufactured for different character sizes in each line for even more flexibility.

### Type holder - shank

Shanks are the common way to combine engraved dies, punches, typeholders and numbering heads to the marking machines. Our shanks are available in various sizes to suit the marking machine to which they have to be attached.

Custom made shanks can also be produced to the customers requirements. Beside the standard shanks, special shanks like dove-tails can be supplied as well.

## Type holder for presses



### Shanks



## [ Marking products ]

### Numbering head

Numbering heads are marking tools for many applications in the metal and plastic-processing industry. With a numberer, you can mark high quantities in excellent quality. Due to the construction, our marking heads are extremely durable, even for heavy duty applications.

Our assortment comprises various marking heads. With a standard manual numbering head, various combinations of figures or letters can be indented with one single stroke into the component. These standard manual numberers are also available with a shank for the use in a percussion press. Also for machine processing, automatic numbering heads indent a consecutive number into the working piece. The numbering sequence on standard automatic heads is consecutive when the handle is depressed. Otherwise a constant inscription is marked. Another kind of numbering head has manually adjustable wheels, where every single wheel can be changed by a special handle. This is the most comfortable numbering head, especially, when you have to change the numbering code frequently.

Marking heads can be used either by hand/hammer or in most types of marking machines. These numberers fit in almost any manual percussion press, air-operated press or hydraulic press.

Numbering heads can be used for numerous applications. Beside the standard numbering heads, which are available with different character sizes and number of wheels, we can supply numbering heads custom made to your requirements. The standard character sizes reach from 0.5 mm to 15.0 mm, in very special constructions even up to 20.0 mm. Each wheel has up to 12 divisions, in some cases even 14. Standard wheels comprise all figures (0-9) and a spacer, every wheel can be adapted to your needs (letters, figures, ...) without any surcharge. The style of the character can be standard, semi-narrow or narrow. The characters can be sharp faced, flat faced, minstress or dot stress. All wheels have tell-tale characters in the wheel grooves to show the actual characters in the marking position. This is particularly helpful when being used in a machine or marking press.



#### Advantages

- Flexible marking of components, type signs, work pieces, and many more
- High quality impressions
- High operating speed for time-saving work
- More than 200 different varieties of numbering heads
- Modular construction for maximum flexibility
- Wheels can be replaced fast and easily
- Variable shanks to fit most types of marking machines and percussion presses
- Spare wheels can be reordered easily

#### Numbering head - Nr. 400

The numbering head 400 is a security-pin locked numbering head designed for the use in marking presses. It is very suitable for marking all metals, many plastics, etc. In a special edition, this marking head is also available with a hand shank for hand/hammer use.

The inscription can be changed quick and simple, no tools are required. The marking wheels can be rotated to any given position, a complete inscription can be changed in seconds. Tell-tale characters in the wheel grooves show the actual characters in the marking position, which is particularly helpful when being used in a machine. The security pin does not only fasten the wheels in position, but also transmits the compressive load in the body of the tool directly to the point of impact, which is an additional advantage of this marking tool.

The standard wheels have sharp faced characters (0-9) with one blank station. Special wheels can be supplied to mark logos, symbols and letters. Character forms can be sharp faced, flat faced, minstress or dot stress. The marking head can be supplied in various character sizes from 2.0 to 15.0 mm.

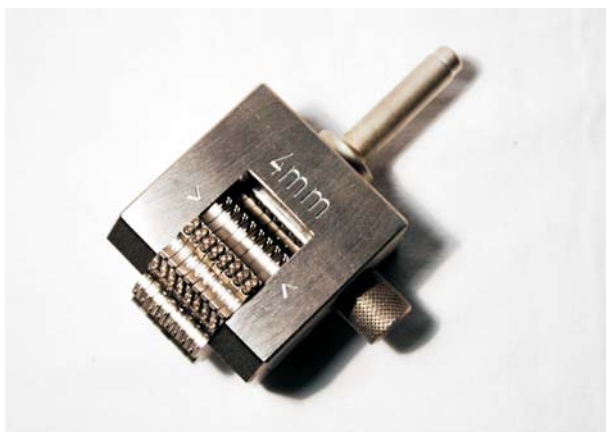
The standard shank has a diameter of 20 mm with a length of 40 mm.

#### Brief summary - numbering head mod. 400

- Standard character size 2.0 - 15.0 mm
- Tell-tale characters in the wheel grooves
- Security pin locked
- Wheels 11 divisions (0-9, blank station)
- Shank: 20 mm diameter, 40-mm length

#### Additional options

- Custom made engravings (letters, logos)
- Revers impressions
- Flat-faced characters
- Minstress or dot stress characters





## [ Marking products ]

### Numbering head

#### Numbering head - Mod. 500

Our numbering head 500 is a feather-locked numbering head for the use in marking machines. Feather-locked numbering heads do not have a security pin, the wheel are locked with a special feather. The change of the inscription is done by hand or with an extra pin, the wheels can rotate in all directions.

Our numbering heads can be supplied in various character sizes from 2.0 to 15.0 mm. Every wheel has 13 stations (2.0 and 3.0 mm) or 12 stations (starting with 4.0 mm). The standard wheels have sharp faced characters (0-9) with one blank station. Special wheels can be supplied to mark logos, symbols and letters. Character forms can be sharp faced, flat faced, minitress or dot stress.

All wheels have tell-tale characters in the wheel grooves to show the actual characters in the marking position. This is particularly helpful when being used in a machine. This numbering head is often used in assembly lines when a security pin could not be removed to the side.

##### Brief summary - numbering head mod. 500

- Standard character size 2.0 - 15.0 mm
- Tell-tale characters in the wheel grooves
- Feather locking for optimum positioning
- Wheels 13 stations (2 + 3 mms) or 12 stations (4 - 15 mms)
- Shank: 20 mm of diameter, 40 mm length
- Nickle-plated wheels for rust protection



#### Additional options

- Custom made engravings (letters, logos)
- Revers impressions
- Flat-faced characters
- Minitress or dot stress characters

#### Automatic numbering head - Mod. 600

Our automatic number heads 600 are designed for serial numbering of metals, plastics and other materials. This marking head is designed to strict tolerances and high durability.

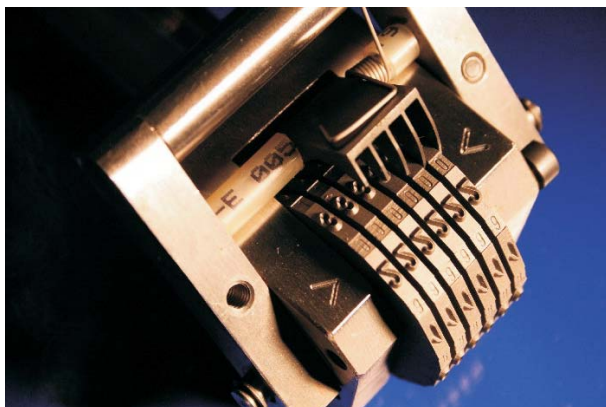
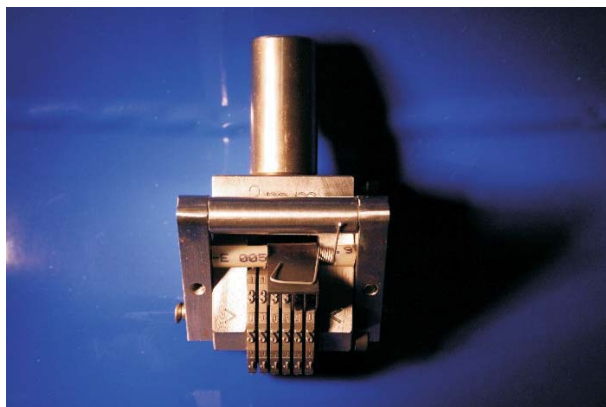
The numbering sequence on standard automatic heads is consecutive when handle is depressed, otherwise a constant inscription is marked. For random change information, the wheels can be quickly changed by hand to the required station.

Our automatic numbering heads can be supplied with character sizes from 1.5 to 10 mm. Each standard wheel has sharp faced characters 0-9. An additional typeholder can be integrated within this marking head for additional information. The wheels can be supplied sharp faced, flat faced, minitress or dot stress. The styles can be condensed or broad standard style or to any special character style.

The standard shank has a diameter of 20 mm with a length of 40 mm.

##### Brief summary - numbering head Mod. 600

- Standard character size 1.5 - 10.0 mm
- Tell-tale characters in the wheel grooves
- Feather locking for optimum positioning
- Wheels 10-part (0-9),
- Shank: 20 mm diameter, 40mm length
- Nickle-plated wheels for rust protection



## [ Marking products ]

## Numbering head

### Numbering head - Mod. 700

The numbering head 700 is a security-pin locked numbering head designed for the manual use. It is very suitable for marking all metals, many plastics, etc. In a special edition, this marking head is also available with a shank for marking presses.

The inscription can be changed quick and simple, no tools are required. The marking wheels can be rotated to any given position, a complete inscription can be changed in seconds. Tell-tale characters in the wheel grooves show the actual characters in the marking position, which is particularly helpful when being used in a machine. The security pin does not only fasten the wheels in position, but also transmits the compressive load in the body of the tool directly to the point of impact, which is an additional advantage of this marking tool.

The standard wheels have sharp faced characters (0-9) with one blank station. Special wheels can be supplied to mark logos, symbols and letters. Character forms can be sharp faced, flat faced, minstress or dot stress. The marking head can be supplied in various character sizes from 2.0 to 15.0 mm.

The standard shank has a diameter of 20 mm with a length of 40 mm.

#### Brief summary - numbering head mod. 700

- Standard character size 2.0 - 15.0 mm
- Tell-tale characters in the wheel grooves
- Security pin locked
- Wheels 11 divisions (0-9, blank station)
- Shank: 20 mm diameter, 40 mm length
- Nickel-plated wheels for rust protection

### Heavy duty numbering head - Mod. 800

The numbering head 800 is a security-pin locked numbering head designed for the manual use. It is very suitable for marking all metals, many plastics, etc. Due to its robust construction, this marking head is usually used for heavy-duty processes.

The inscription can be changed quick and simple, no tools are required. The marking wheels can be rotated to any given position, a complete inscription can be changed in seconds. Tell-tale characters in the wheel grooves show the actual characters in the marking position, which is particularly helpful when being used in a machine. The security pin does not only fasten the wheels in position, but also transmits the compressive load in the body of the tool directly to the point of impact, which is an additional advantage of this marking tool.

The standard wheels have sharp faced characters (0-9) with one blank station. Special wheels can be supplied to mark logos, symbols and letters. Character forms can be sharp faced, flat faced, minstress or dot stress. The marking head can be supplied in various character sizes from 2.0 to 15.0 mm.

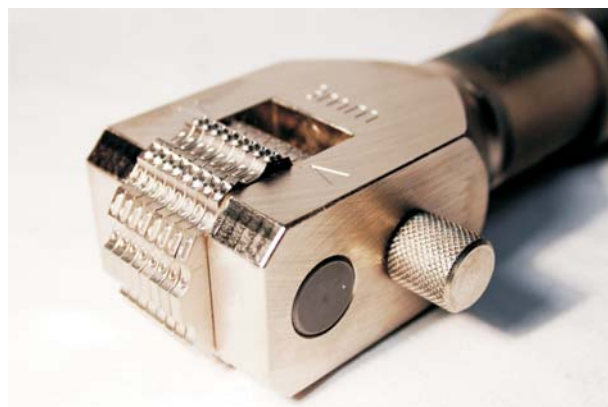
#### Brief summary - numbering head mod. 800

- Standard character size 2.0 - 15.0 mm
- Tell-tale characters in the wheel grooves
- Security pin locked
- Spare parts available
- Additional handle for maximum security
- Wheels 11 divisions (0-9, blank station)
- Nickel-plated wheels for rust protection



### Additional options

- Custom made engravings (letters, logos)
- Revers impressions
- Flat-faced characters
- Minstress or dot stress characters



## [ Marking products ]

### Numbering head

#### Numbering head - Mod. 900

Numbering heads 900 are manually adjustable numbering heads with handles for every wheel. This marking head is used when the inscription changes very often. The wheels can be switched by depressing the handle. Tell-tale characters in the wheel grooves show the actual characters in the marking position, which is particularly helpful when being used in a machine.

This marking head is available in various character sizes from 2.0 to 15.0 mm. Up to 20 wheels can be fitted in this head. Wheels with character sizes up to 5.0 mm height have 14 divisions, so you can place all figures, one spacer and 3 additional signs on one wheel. Especially for letter inscriptions, this marking head is very suitable as the whole alphabet can be engraved on two wheels (A-M, N-Z). For character sizes of 6.0 mm and above, each wheel has only 11 stations.

The standard wheels have sharp faced characters (0-9) with one blank station. Special wheels can be supplied to mark logos, symbols and letters. Character forms can be sharp faced, flat faced, minitress or dot stress.

The standard shank has a diameter of 20 mm with a length of 40 mm.

#### Brief summary - numbering head Mod. 900

- Standard size 2.0 - 15.0 mm
- Tell-tale characters in the wheel grooves
- Single wheel adjustment
- Wheels 14 stations (2 - 5 mms) or 11 stations (6 - 15 mms)
- Shank: 20 mm of DM, 40-mm length
- Nickel-plated wheels for rust protection



#### Additional options

- Special engraving on the mint wheel
- Reflecting writing – legal engraving
- Dull engraving (flat engraving)
- Radius engraving with broken edges
- Dotted engraving – point resolution
- Security handle - security holder

#### Numbering head - Minimarker

The numbering head "mini-marker" is a security-pin locked numbering head designed for the manual use and simple marking requirements. It is very suitable for marking all metals, many plastics, etc.

The inscription can be changed quick and simple, no tools are required. The marking wheels can be rotated to any given position, a complete inscription can be changed in seconds. Tell-tale characters in the wheel grooves show the actual characters in the marking position, which is particularly helpful when being used in a machine. The security pin does not only fasten the wheels in position, but also transmits the compressive load in the body of the tool directly to the point of impact, which is an additional advantage of this marking tool.

The standard wheels have sharp faced characters (0-9) with one blank station. Character forms can only be sharp faced in sizes from 2.0 – 8.0 mm.

This marking head has no additional options, it is a low-cost marking head for simple marking tasks.

#### Brief summary - numbering head "mini-marker"

- Standard character size 2.0 - 8.0 mm
- Tell-tale characters in the wheel grooves
- Security pin locked
- Wheels 11 divisions (0-9, blank station)
- Nickel-plated wheels for rust protection





## [ Marking products ]

### Percussion press

For many marking processes, a press is needed for economic indent marking. We offer a wide range of hand operated and powered percussion presses. Designed with the operator in mind, these presses are

For many marking processes, a press is needed for economic indent marking. We offer a wide range of hand operated and powered percussion presses. Designed with the operator in mind, these presses are easy to operate with high productivity yet low initial costs.

Our hand operated percussion presses are easy and safe to operate. These presses can be used anywhere in the factory, guarding is not legally required in most countries. Our percussion presses are easy and save to operate, service and maintain.

Marking is achieved by compressing and releasing a spring loaded ram using either the hand lever or pneumatic air cylinder. The spring compression (and therefore marking load) can be easily and quickly adjusted. At the end of the lever travel the spring is automatically released and the marking operation performed.

#### Percussion press MB 15 & MB 15V

Our hand operated percussion press mod. MB 15 is our smallest press in this range. With a maximum load of 500 kg, this marking press is suitable for simple marking tasks. Standard applications are marking of plastics, marking of packaging (especially in the pharmaceutical industry the stamping of drug boxes) and more.

Marking is achieved by compressing and releasing a spring load ram using the hand lever. At the end of the lever travel the spring is automatically released and the marking operation performed. The spring compression – and therefore the marking load – can be easily and quickly adjusted from 0 to maximum load. Once the spring compression is adjusted, you will reach a consistent depth of marks. Due to the pre-clamping action of the press, material deformation can be prevented easily.

#### Percussion press MB20 & MB20V

Our hand operated percussion press mod. MB20 is our best-selling bench mounted marking press.

With a marking load of maximum 3000 kg (30 kN), this press allows already marking of various metals and plastic components. Especially for name plates and inventory plates, this machine has a great cost/performance ratio.

Marking is achieved by compressing and releasing a spring load ram using the hand lever. At the end of the lever travel the spring is automatically released and the marking operation performed. The spring compression – and therefore the marking load – can be easily and quickly adjusted from 0 to maximum load. Once the spring compression is adjusted, you will reach a consistent depth of marks. Due to the pre-clamping action of the press, material deformation can be prevented easily.

#### Prägepresse MB32 bzw. MB35V

Our hand operated percussion press mod. MB32 is our most powerful manual marking press. With a marking load of 6500 kg (65 kN), most industrial marking tasks can be performed with this press.

Marking is achieved by compressing and releasing a spring load ram using the hand lever. At the end of the lever travel the spring is automatically released and the marking operation performed. The spring compression – and therefore the marking load – can be easily and quickly adjusted from 0 to maximum load. Once the spring compression is adjusted, you will reach a consistent depth of marks. Due to the pre-clamping action of the press, material deformation can be prevented easily.



Mod. MB32V



Mod. MB20

#### Advantages

- Pre-clamping action prevents material deformation
- Maximum sensitivity and accuracy
- Consistent depth of mark
- Exact pressure setting from 0 kN up to the maximum
- Easy accessibility for different sizes
- High production rates
- Enormous range of accessories
- Low price – for small and medium production series
- Can also be used for riveting, bending, forming and other non-marking operations

#### Applications

Our percussion presses can be used anywhere in the factory for numerous marking processes and tasks. Our presses are very easy and safe to operate, no guarding is necessary in most countries.

Some examples are:

- Marking of type plates or inventory plates
- Stamping of machine parts
- Marking with high loads
- Marking of components in assembly lines
- Manual stamping of large, heavy or bulky components

## Percussion press

	MB 15	MB 20	MB 32
Marking load	500 kg (5 kN)	3000 kg (30 kN)	6000 kg (60 kN)
Daylight (max.)	0 - 260 mm	0 - 323 mm	0 - 390 mm
Net weight	10 kg	33 kg	99 kg
Shank - diameter	8 mm	10 mm	16 mm
Shank - length	32 mm	38 mm	48 mm
T-nut (DIN 650)	6 mm	8 mm	12 mm
Overall stroke	35 mm	61 mm	106 mm
Pre-travel	10 mm	18 mm	22 mm
Useable stroke	0 - 25 mm	0 - 43 mm	0 - 84 mm

[illegible][illegible]

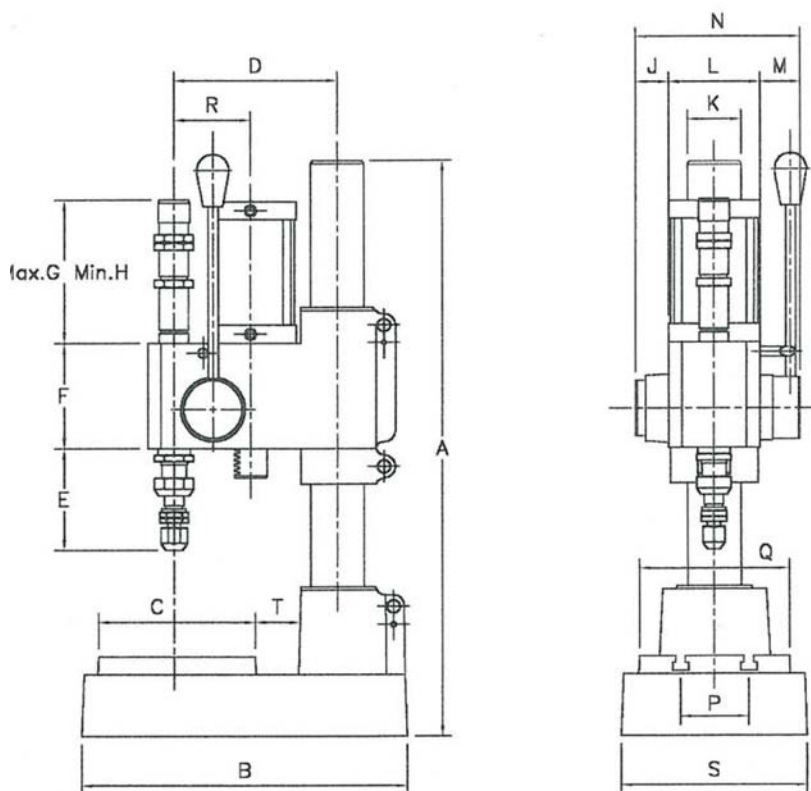
## [ Marking products ]

## Percussion press

### Pneumatic percussion press - Technical details

	MB 15V	MB 20V	MB 32V
Marking load	600 kg (6 kN)	3500 kg (35 kN)	7500 kg (75 kN)
Daylight	0 - 175 mm	0 - 265 mm	0 - 300 mm
Net weight	14.5 kg	53 kg	162 kg
Shank - diameter	8 mm	10 mm	16 mm
Shank - length	32 mm	38 mm	48 mm
T-nut (DIN 650)	6 mm	8 mm	12 mm
Overall stroke	22 mm	60 mm	80 mm
Pre-travel	8 mm	18 mm	22 mm
Useable stroke	0 - 14 mm	0 - 42 mm	0 - 58 mm
Air pressure (max)	10 bar	10 bar	10 bar
Air consumption / stroke	0.18dm <sup>3</sup> (4bar)	1.05dm <sup>3</sup> (6bar)	1.67dm <sup>3</sup> (6bar)

### Pneumatic percussion press - Drawing



Zeichnungen und technische Daten können ohne Avisierung verändert werden.

### Pneumatic percussion press - Dimensions

	A	B	C	D	E	F	G	H	K	J	L	M	N	P	Q	R	S	T
MB15V	375	225	110	113	48	67	121	91	36	22	58	30	110	50	110	170	240	30
MB20V	630	360	170	180	120	116	162	132	60	38	102	45	185	80	170	85	200	50
MB32V	840	503	240	260	155	180	340	320	100	40	170	52	262	120	240	112	300	70

(Alle Angaben in mm)



Mod. MB32V



Mod. MB20

### Marking spring





## [ Marking products ]

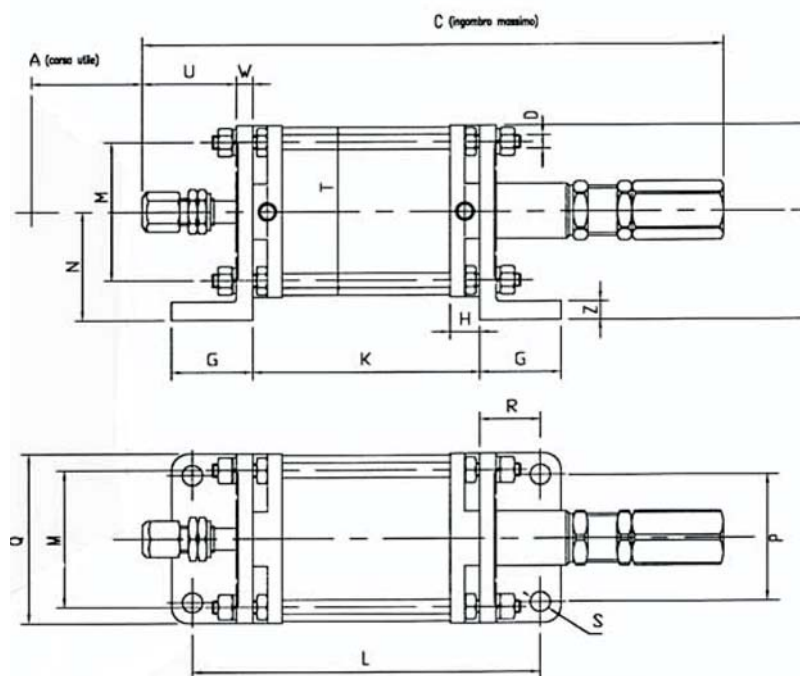
Pneumatically powered percussion presses are suitable for fitting into automated production lines and machines. Due to its construction, our marking unit can be mounted in any position within the assembly line.

Marking is achieved by compressing and releasing a spring load ram using compressed air. 3 different sizes of marking units are available in our range.

### Pneumatic marking unit - Technical details

	MB 19V	MB 21V	MB35V
Marking load	600 kg (6 kN)	3500 kg (35 kN)	7500 kg (75 kN)
Net weight	2 kg	10 kg	38 kg
Shank - diameter	8 mm	10 mm	16 mm
Shank - length	32 mm	38 mm	48 mm
Overall stroke	32 mm	67 mm	110 mm
Pre-travel	8 mm	18 mm	25 mm
Useable stroke	0 - 24 mm	0 - 49 mm	0 - 85 mm
Air pressure (max)	10 bar	10 bar	10 bar
Air consumption / stroke	0.22dm <sup>3</sup> (4bar)	1.05dm <sup>3</sup> (6bar)	2.73dm <sup>3</sup> (6bar)

### Pneumatic marking unit - Drawing



### Pneumatic marking unit - Dimensions

	A	C	D	E	G	H	K	L	M	N	P	W	R	S	T	U	W	Z
MB19V	48	260	M8	78	45	14	88	158	50	45	45	65	35	10.5	32.5	45	10	10
MB21V	88	407	M10	130	55	20	151	238	90	73	90	115	43	14	73	65	12	12
MB35V	105	841	M16	216	86	30	232	268	140	125	140	180	66	17	92	134	27	25

(Alle Angaben in mm)

## Percussion press



### Marking result



## [ Marking products ]

## Special marking press

### Rack & pinion press

Rack & pinion presses are available either for manual or pneumatic operation.

In contrast to percussion presses, a rack & pinion press does not have a spring load. The marking load is achieved by pulling a lever at the side of the press. A rotary movement is converted this into a linear movement.

This kind of marking has several advantages. First, the marking load can be determined sensitively by the operator. Secondly the duration of the marking pressure can be freely chosen by the operator, which is necessary for some marking proceedings like hot foil marking or other applications.

This marking press is available as hand operated or pneumatically powered press. The pneumatic press will be supplied with twin security buttons to meet CE regulations.

Maximum daylight is adjustable without the need for tools, which allows for a variety of different shaped components to be accommodated quickly and easily. An enormous range of accessories (steel types, machine holders, numbering heads) makes this press even more flexible.

### Hot foil marking press

Hot marking machines are marking machines with an adjustable thermostat to regulate the temperature to meet the requirements of the material to be marked.

In addition, this hot foil marking press can be equipped with a ribbon feed system for colourful inscriptions.

Hot marking is a very popular way to brand your products and articles, especially for leather, paper, plastic, wood, fabric and similar products.

For this marking machine, an enormous range of marking tools is available. Due to the technique, typeholders are manufactured from steel or brass. This creates the best heat conductivity to the types during the marking press. Various standard type holders are available. For hot marking, you can use sharp faced or flat faced characters.

### Cold marking press

Cold marking presses work like a rack & pinion marking press. In contrast to the rack & pinion press, these machines are equipped with an extra ribbon feed system for cold marking foils.

Our cold marking presses are available hand operated or pneumatically powered.

### MB20P



### MB20E



## [ Marking products ]

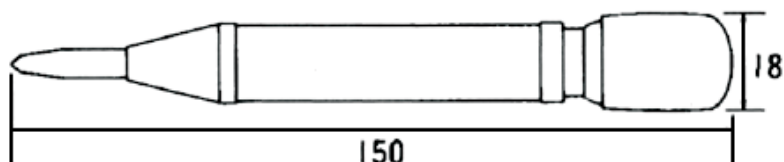
### Micro center punch "Micro"

Micro center punches are portable marking units. The internal impact force is triggered by pressure using the palm of the hand.

The power of this marking tool is limited to 50 kg, which is suitable for various small scale marking tasks.

Our micro punch is practical, versatile and quick. Each punch is available with various special marking symbols are letters or numbers in 2.5 character size. The available symbols are shown in the table. Special logos can be supplied on request with a maximum character size of 3.0 mm.

### Micro center punch "Micro" - Drawing



## Special marking press



### Available symbols

	1	2	3	4	5	6	7	8
A	□	♥	△	⊗	♠	○	△	⊗
B	⊕	⊖	⊗	⊘	⊙	⊚	⊛	⊜
C	⊝	⊞	⊟	⊠	⊡	⊢	⊣	⊤
D	⊥	⊦	⊧	⊨	⊩	⊪	⊫	⊬
E	⊭	⊮	⊯	⊰	⊱	⊲	⊳	⊴
F	⊵	⊶	⊷	⊸	⊹	⊺	⊻	⊼
G	⊽	⊾	⊿	⋈	⋉	⋊	⋋	⋌

### Marking stamp





## [ Marking products ]

### Roller marking machine

Roll marking has several advantages over press marking in that it is possible with the appropriate tooling to mark both flat and round work pieces with the same machine.

You can mark cylindrical surfaces on a flat anvil fixture as well as on a twin roll fixture. Marking of thin walled tubular components is also possible with roller marking machines. Also flat work pieces can be marked with a roller die held and controlled in a geared roll carrier, where the work piece remains stationary.

Further advantages are related to the fact then when roll marking is used only a small amount of the inscription is in contact with the piece being marked. This means that the minimum marking load is required which in turn means less operator effort when using the marking press and less distortion of the piece being marked.

Roller marking machines can mark round work pieces with different diameters. According to diameter and application, different machines, either manually or electrically powered are available.

### Roller marking machine



### Manual roller marking machine - MB41M

The manual roller marking machines MB41M is the perfect machine to mark cylindrical components. These work pieces can either be solid or hollow with a diameter from 8 to 65 mm.

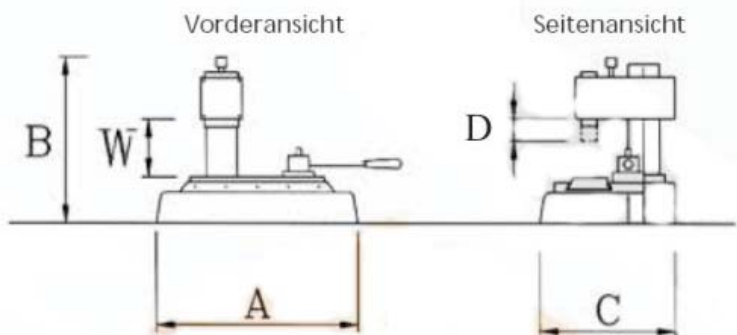
Solid cylindrical components are marked using a twin roll fixture, thin walled hollow parts are marked using mandrel support.

With this machine, numerous marking tools can be used. Steel types and machine holders, custom made engraved stamps and numbering heads are most suitable for our marking machine MB41.

### Mod. MB41M



### Manual roller marking machine - MB41M - Dimensions



					max.		max
A	B	C	D	W	DM	Weight	Stroke of slide
295	300	240	30	125	65	35	100
					(mm)	(kg)	(mm)

### Accessories - MB41M



AM RB2k



AM DVk

## [ Marking products ]

### Electric roller marking machine - MB41E

The roller marking machine MB41E is the motorized version of the machine MB41M. This press has a geared motor connected to 380 V, 3 phases, 50 Hz. Our MB41E is bench mounted with twin push button for safety reasons. The twin push buttons are integrated in the bench.

Our MB41E is the perfect machine to mark cylindrical components in large scale. The work pieces can either be solid or hollow with a diameter from 8 to 65 mm. Solid cylindrical components are marked using a twin roll fixture, thin walled hollow parts are marked using mandrel support.

With this machine, numerous marking tools can be used. Steel types and machine holders, custom made engraved stamps and numbering heads are most suitable for our marking machine MB41.

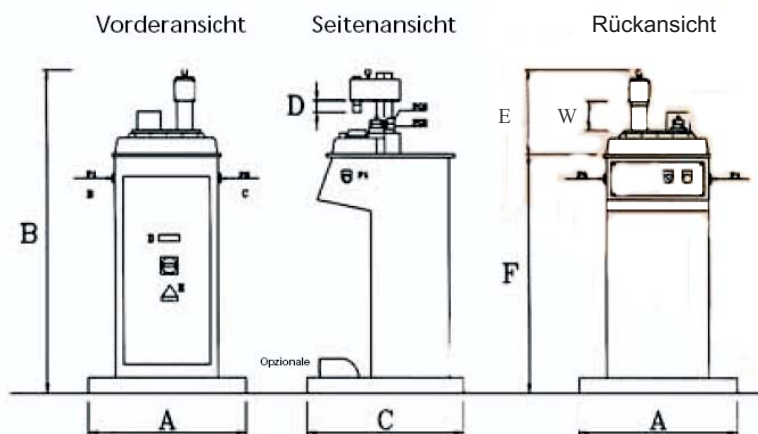
## Roller marking machine



### Accessories

- Twin roll fixture
- Mandrel support
- Steel types and type holders
- Numbering heads
- Custom made engraved dies

### Marking result



A	B	C	D	E	F	W
600	1090	600	30	300	760	125
max			max.			
DM	weight	stroke of slide		motor		
65	110	100		380		
(mm)	(kg)	(mm)		(Volt)		

## [ Marking products ]

## Roller marking machine

### Manual roller marking machine MB71M

The roller marking machine MB71M is a manually operated machine for the marking of cylindrical, conical or flat components. Cylindrical work pieces may have a diameter of up to 110 mm.

The depth of the mark is very simple to adjust. Even if the diameter differs a little, consistent depth of mark is achieved by spring washers, which are fitted in the table.

Solid cylindrical components are marked using a twin roll fixture, thin walled hollow parts are marked using mandrel support.

#### MB71M - Dimensions

					max.		max
A	B	C	D	W	DM	Weight	Stroke of slide
340	830	310	125	235	110	126	180
					(mm)	(kg)	(mm)

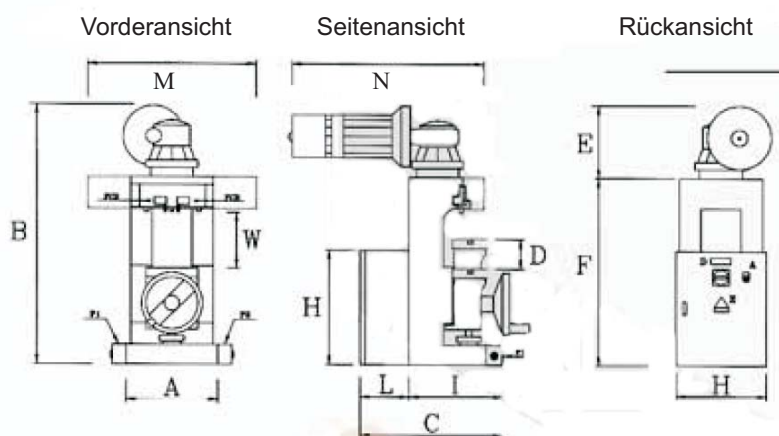
### Electric roller marking machine MB71E

The roller marking machine MB71E is an electrically operated machine for the marking of cylindrical, conical or flat components. Cylindrical work pieces may have a diameter up to a maximum of 110 mm.

The depth of the mark is very simple to adjust. Even if the diameter differs a little, consistent depth of mark is achieved by spring washers, which are fitted in the table. This machine comes with a bench and two twin push buttons for a safe and efficient workflow.

Solid cylindrical components are marked using a twin roll fixture, thin walled hollow parts are marked using mandrel support.

#### MB71E - Drawing



#### MB71E - Dimensions

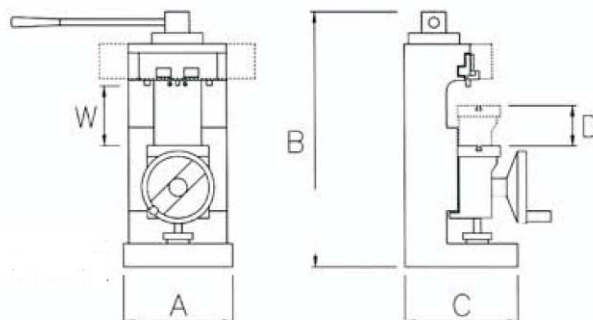
A	B	C	D	E	F	G	H	I	L	M	N	W
360	1020	500	125	230	730	350	450	310	190	480	560	235
max.						max.		Distance				
DM	Gewicht	Motor	Stroke of slide									
110	138	380	180					130				
(mm)	(kg)	(V)	(mm)					(mm)				

### MB71M



Vorderansicht

Seitenansicht



### MB71E





## [ Marking products ]

## Roller marking machine

### Horizontale Abrollmarkiermaschine MB76E

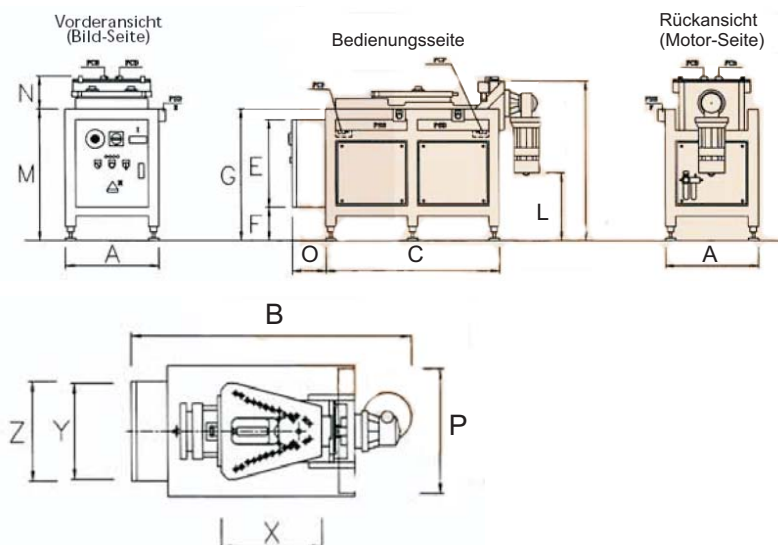
The roller marking machines MB76E or MB76EP are designed to mark horizontally recumbent round work pieces, round parts and flanges up to a maximum diameter of 650 mm.

The loading and unloading of the work piece is carried out manually. A spring washer with adjustable resistance presses the work piece to be marked against the typeholder or marking tool. Please note, that the maximum length of text must not exceed 180 mm. For more information, you can use a multiline typeholder or marking tool. For even deeper marking you can repeat the same marking cycle several times.

This electrically operated machine comes complete with twin push buttons mounted on the machine and is very easy to use. This roller marking machine is available in two versions. The MB76E is the standard electrically operated version, MB76EP is the electro-pneumatic version.

With this machine, numerous marking tools can be used. Steel types and machine holders, custom made engraved stamps and numbering heads are most suitable for our marking machine MB76E.

### MB 76E - Drawing



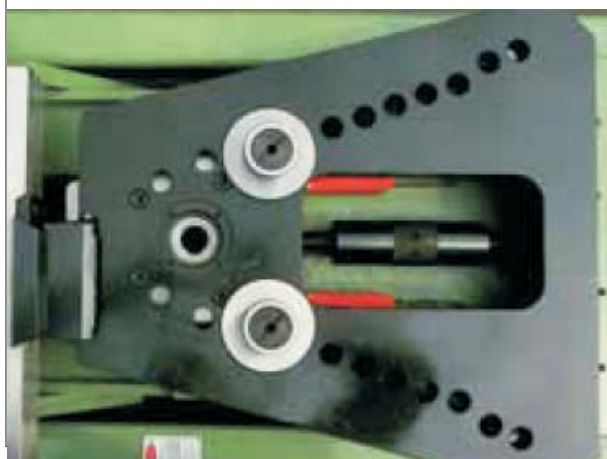
### MB76E + MB76EP - Dimensions

A	B	C	E	F	G	I	L	M	N	O	P	X	Y	Z
530	1170	1000	500	190	750	910	380	750	190	190	480	470	350	440
max.					max.									
DM	Weight		Motor		Stroke of slide			Distance						
600	360		380		290			130						
(mm)	(kg)		(V)		(mm)			(mm)						
A	B	C	E	F	G	I	L	M	N	O	P	X	Y	Z
530	1170	1000	500	190	750	910	380	750	190	190	480	470	350	440
max.					max.						Air-			
DM	Weight		Motor		Stroke of slide			Distance			pressure			
600	360		380		290			360			6-8			
(mm)	(kg)		(V)		(mm)			(mm)			(bar)			

### MB76EP



### MB76E (Top view)



## [ Marking products ]

## Roller marking machine

### Special roller marking machine - MB76S

With the roller marking machine MB76 you can mark vertically positioned round components, rings, etc. up to a maximum diameter of 1000 mm.

The loading and unloading of the work piece is carried out manually. Please note, that the maximum length of text must not exceed 180 mm. For more information, you can use a multiline typeholder or marking tool. For even deeper marking you can repeat the same marking cycle several times.

The roller marking machine MB76 is available in 3 different versions:

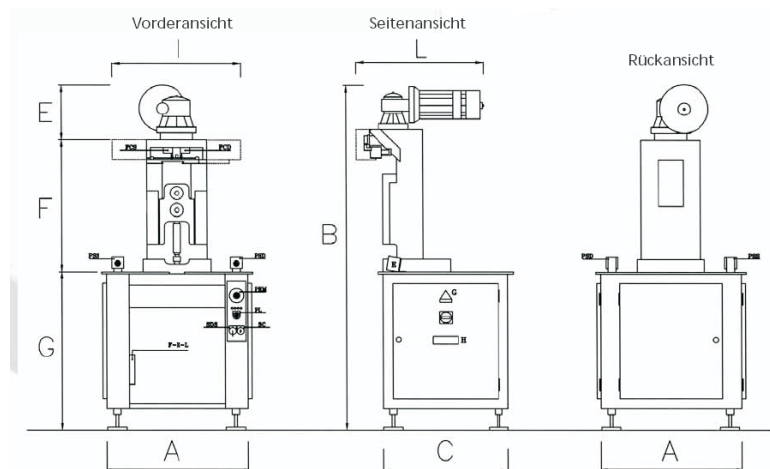
MB76M: Manual operation

MB76E: Electrically powered

MB76EP: Electro-pneumatically powered

This electrically operated machine comes complete with twin push buttons mounted on the machine and is very easy to use. The electro-pneumatically powered machine has a pneumatic feed of the part to the marking head. The vertical movement of this press is 22 mm.

### Drawing



### MB76SE - Dimensions

A	B	C	E	F	G	H	I	L	M	W
730	1785	650	280	685	820	-	480	560	-	-
max.					max.					
DM	Weight		Motor		Stroke of slide			Distance		
1000	300		380		180			130		
(mm)	(kg)		(V)		(mm)			(mm)		

### MB76SEP - Dimensions

A	B	C	E	F	G	H	I	L	M	W		
730	1785	650	280	685	820	-	480	560	-	-		
max.						max.						Air-
DM	Weight		Motor		Stroke of slide			Distance			pressure	
1000	300		380		180			130			6-8	
(mm)	(kg)		(V)		(mm)			(mm)			(bar)	

### MB76S



### MB76E (Side view)



## [ Marking products ]

## Roller marking machine

### Twin roller fixture S2R

#### Twin roller fixture S2R

The twin roller fixture S2R is used on roller marking machines to rotate the workpiece to be marked about its own axis. The marking tool (machine holder with steel types or numbering head) causes the part to be rotated during the marking process.

#### Twin roller fixture S2R Mini

The twin roller fixture S2R mini is similar to the fixture S2R but more suitable for smaller workpieces.

#### Twin roller fixture S2RV

The twin roller fixture S2RV is variable and adjustable to the exact diameter of the parts to be marked. With this tool, the workpiece may rotate about its own axis.

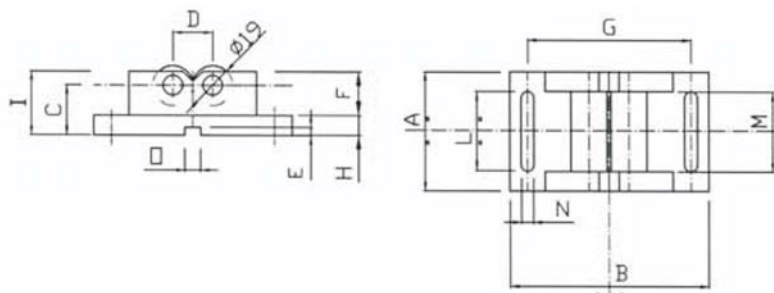
#### Roller support S3R

This roller support is used only on roller marking machines for endless imprints. The rollers and guides of this tool are designed for continuous marking. The center roller can be engraved to allow marking on two faces simultaneously.

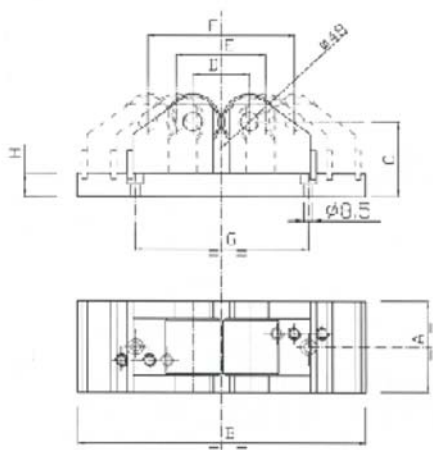
#### Mandrel fixture S1R

Mandrel fixtures are fixtures with free running mandrels supported in needle bearings allow thin walled components to be supported internally to prevent friction and distortion under the marking load. The mandrels are quickly interchangeable to accept a range of bore sizes. Special fixtures can be manufactured to accept conical or tapered workpieces.

### S2R - Drawing



### S2Rv - Drawing



### S2R und S2R mini



### S2RV



### S3R





## [ Marking products ]

Dot marking technology is a most flexible and time saving method of marking various components. Dot marking is also called peen marking, stylus pin marking or micro-percussion marking. This technique intends a series of dots into materials to form human readable alphanumeric identification, logos and 2D data matrix codes.

The Marktronic system is well known in various industries where a high quality of marks must be reached. These machines work extremely reliable due to its robust construction.

The marking depth can reach 1 mm in mild steel, 1.5 mm in aluminium on flat or uneven surfaces. These machines are available either electrically or pneumatically powered.

These machines are easy to operate and need only a minimum of maintenance. Due to large scale production and therefore decreasing prices, this technology is already used for numerous applications in the industrial production process. The software of the machines is easy to handle, even newcomers are able to reach high-quality markings within shortest period.

### Bench mounted dot marking machine

With a bench mounted dot marking machines, flat workpieces and even conical components can be marked. The marking head itself is fastened on a robust column. Each workpiece must be loaded and unloaded manually to the working table. The Z-axis of the machine is adjusted to the component to be marked. A wide range of options simplify the fixture and the marking of the component.

This machine is typically used for marking name plates, identification plates, small work pieces and many more. This size of the plate or component may vary, the maximum size which can be marked is 300x150 mm.

Each dot marking machine can either be programmed with a familiar PC windows interface or manually with a controller.

### Portable dot marking machine

Portable dot marking machines have a patented aluminium marking head protected in a tough polymer case. With this portable marking head, you do not have to transport heavy items to the marking machine (like with the bench mounted dot marking machine). In this case, the marking head with only 2.3 kgs is transported to the workpiece for on-site marking.

### In-line dot marking unit

Marktronic integrator dot marking units can be installed in assembly lines and customized production lines for the 24/7 usage.

## Dot marking machine



### Advantages

- High flexibility
- Easy to use
- Quick installation
- User-friendly service
- Software based on Windows software
- Extensive accessories
- Huge number of marking options
- High marking speed
- Electromagnetically driven, compressed air necessary
- Pneumatically driven marking machines for even more power

### Applications

- Programmeable marking
- Component identification
- Component traceability
- Serial numbering
- Logo marking
- Security marking
- Health & safety appliance marking
- Certification marking
- Trophy and award marking
- Time and date marking
- Batch and shift coding
- Part numbering
- Calibration systems
- Label and tag marking
- Direct part marking
- Steel stock marking



## [ Marking products ]

## Dot marking machine

### Dot marking machine MarkMate USB

The MarkMate USB is a bench mounted dot marking machine for a wide range of industrial and commercial applications.

The USB connectivity brings printer like functionality to the field of component marking. The marking area of 100 mm by 75 mm allows multi-component marking. The MarkMaster software is simple to use and offers many options to the operator. Operator training is minimized and production efficiency is maximized. The multilingual user interface allows users to choose between different character fonts and type sizes as well as angular and arc marking, serial numbers, date and time marking. Variable force control ensures the optimum mark depth for all engineering materials up to 62 Rc. The lead-screw driven marking head guarantees dot precision unmatched on other low cost systems.

The MarkMate USB requires no air supply and is powered only by a standard 220 Volt electric source. Therefore, these machines operate significantly quieter than pneumatically powered systems.

This marking unit is easy to use out of the box. The installation of the machine takes only a few minutes, after having the software installed you can almost immediately start with the marking of your layouts.

### Marking area and layouts

With a marking area of 100 mm by 75 mm, most industrial marking requirements can be met even with our low-cost dot marking unit MarkMate USB.

Within the marking area, various information can be programmed and marked on the workpiece. A wide range of standard options like serial numbers, time and date marking and other options simplify your marking tasks significantly. Logos and graphics can either be created in the graphics tool or be imported from other CAD systems.

### Software MarkMaster

The software Mark master standard is provided to every MarkMate USB. With this software numerous layouts can be also programmed in short time.

The MarkMaster software is an easy to use windows based package which enables on-screen creation of marking layouts using a simple drag and drop graphical interace. With this software, you can easily create and mark logos using the in-built graphics tools. Alternatively, DXF and HPGL formats can be imported from other CAD systems. With the trial run feature, you can rapidly check the layouts before the part is marked. The marked text is positioned on screen while the machine outlines the marking position on the part itself.

#### Advanced features of the MarkMaster Advanced are:

- Support of all TTF fonts
- Database connectivity for marking data queries
- Database connectivity for duplicate data checking
- Security password features
- Data logging for marking report generation



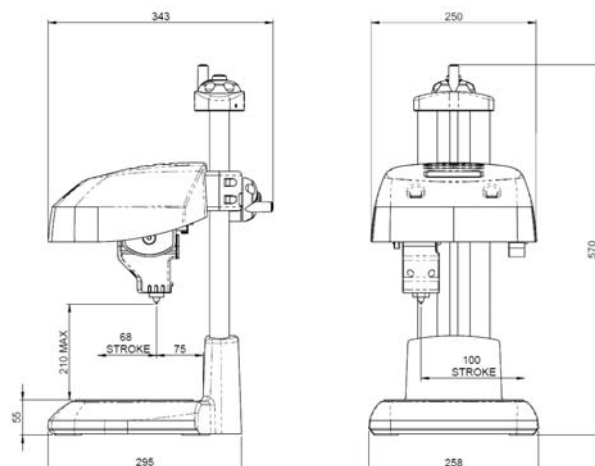
### Technical details

- Marking area: 100 x 75 mm
- Character size: 0.18 - 99.9 mm (in 0.18 mm of steps)
- Standard fonts: 5x7, 7x9, Varidot, TTF fonts with MarkMaster advanced
- Graphics import: DXF, HPGL
- Weight: 13 kg
- Power supply: 220 V, 50 hertz

### Additional options

- Magnetic table – manually activated magnetic base plate for holding ferrous items
- "T"-slotted table – extruder or machined aluminium T-slotted base
- Standard label fixture – Simple manually operated label fixture
- Extra marking stylus
- Additional guarantee
- MarkMaster advanced software
- Windows software (WinMax)
- External start/stop counter
- External foot trigger

### Technical drawing



## [ Marking products ]

### Dot marking machine

#### Dot marking machine MarkMate LCD

The MarkMate LCD is a bench mounted dot marking machine for a wide range of industrial and commercial applications.

The MarkMate LCD is a "stand alone" machine which can be used without PC. The marking head is connected to an extra controller. The layouts are programmed directly in the controller on a LCD screen. This dot marking machine is easy to use out of the box. Even unskilled operators are able to program various layouts even with a minimum of training. The multilingual user interface allows users to choose between different character fonts and type sizes as well as angular and arc marking, serial numbers, date and time marking. However, we offer also trainings for this machine if requested.

Requiring no air supply and powered only by a standard 220 volt electric source, the MarkMate LCD is both highly efficient and significantly quieter than pneumatically actuated systems.

#### Marking area and layouts

With a marking area of 100 mm by 75 mm, most industrial marking requirements can be met even with our low-cost dot marking unit MarkMate LCD.

Within the marking area, various information can be programmed and marked on the workpiece. A wide range of standard options like serial numbers, time and date marking and other options simplify your marking tasks significantly. Logos and graphics can either be created in the graphics tool (logo editor). However, you are also able to import graphics through the RS232 serial port.

With the trial run feature, you can rapidly check the layouts before the part is marked. Each single line within the layout can be marked while the machine outlines the marking position on the part itself.

#### Stand alone or PC operated

The separate controller protects the electronics from the mechanical shock loading generated in the marking head and the large high contrast LCD screen gives users clear control over the marking operation without the need for a separate PC. The controller however provides also connectivity options through RS232 serial and digital I/O ports. You can also program the layouts with an additional software (WinMax).



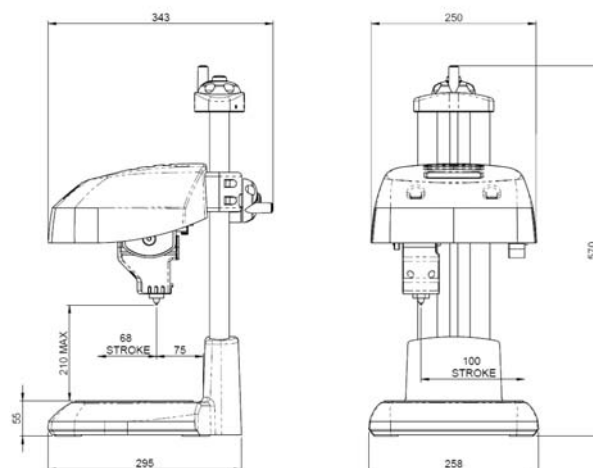
#### Technical details:

- Marking area: 100 x 75 mms
- Character size: 0.18 - 99.9 mm (in 0.18 mm of steps)
- Standard fonts: 5x7, 7x9, Varidot, TTF fonts with MarkMaster advanced
- Controller can save up to 600 layouts
- Weight: Marking head: 13 kg, Controller: 7 kg
- Power supply: 220 V, 50 hertz

#### Additional options

- Magnetic table – manually activated magnetic base plate for holding ferrous items
- "T"-slotted table – extruder or machined aluminium T-slotted base
- Standard label fixture – Simple manually operated label fixture
- Extra marking stylus
- Additional guarantee
- MarkMaster advanced software
- Windows software (WinMax)
- External start/stop counter
- External foot trigger
- Automatic label supply

#### Technical drawing





## [ Marking products ]

### Dot marking machine BenchDot

Our dot marking machine BenchDot is a robust and fully programmable dot marking machine designed for accuracy, speed, power and reliability. It is available in various different in four different series and several variations to meet the different operators' requirements.

All models include a high quality ball screw mechanism with unique twin linear rails and twin linear bearings on each axis and a rigid cast column and base.

This marking tool can either be controlled by a standard PC using Windows-based software (MarkMaster) or with an extra controlling unit (controller 3000). The controller unit 3000 has a robust keyboard and a large and high contrast graphical screen to allow easy programming & previewing of marks. Up to 1350 layouts can be saved in this controller unit. Various interfaces and communications ports allow additional options.

### Marking area and layouts

With a marking area of up to 300 x 150 mm, almost any kind industrial marking requirements can be met even with our high-quality marking machine.

Even in the standard version, you are able to program layouts using the multilingual user interface with straight, angled, arc and revers marking in various character sizes and fonts. Basic machine fonts are 5x7, 7x9, Varidot and OCR fonts, using the MarkMaster advanced software, you will also be able to use all True Type fonts available in your PC system. Time and date marking, serial numbers and variables are easy to program as well. Logos and graphics can either be created in the logo editor or imported from other CAD systems (PLT, DXF).

With the trial run feature, you can rapidly check the layouts before the part is marked. Each single line within the layout can be marked while the machine outlines the marking position on the part itself.

### Dot marking machine BenchDot - Available models

#### Benchdot E: Electromagnetic dot marking

This is our standard machine where no air supply is required. Using no air supply, this machine works remarkable quieter than pneumatically operated machines. With this dot marker you will reach a high consistency of marking depth.

#### Benchdot EZA - Electromagnetic dot marking, digital Z axis with Autosense

This machine is based on the series "Benchdot E" but offers additionally a powered programmable Z digital axis for marking head height adjustment. The AutoSense system allows self adjustment to variation of part batch height with the best precision, repeatability and consistency. This dot marking machine is especially well suited to Data Matrix marking. With this machine, you will be able to mark different part levels with no manual adjustment.

#### Benchdot EZAV - Electromagnetic dot marking, digital Z axis, Autosense, VeriSmart

The Benchdot EZAV is based on the series EZA, additional this dot marking machine offers you an integrated in-process Data Matrix verification system (VeriSmart). With a 5 mega-pixel sensor, you can verify a wide range of codes. The Mark2Verify Software provides simple traffic light feedback to the operator, verification results and advanced features.

#### Benchdot DP: Deep Pneumatic dot marking

This dot marking machine is the pneumatically operated version of the Benchdot marking tool. With this dot marker, you will be able to mark up to 1.5 mm in mild steel due to its powerful pneumatic option.

## Dot marking machine



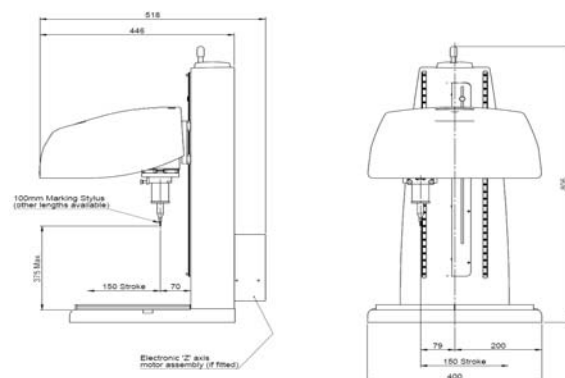
### Technical details:

- Marking area: 60x60, 100x100, 150x150, 300x150
- Character size: 0.18 - 99.9 mm (in 0.18 mm of steps)
- Standard font: 5x7, 7x9, Varidot, TTF writings
- Memory: up to 1350 layouts saveable
- Weight: Marking head: 34 kg, Controller: 10 kg
- Power supply: 220 V, 50 hertz
- Windows software: MarkMaster optional

### Additional options

- Windows software MarkMaster
- Magnetic bred fixture - manually activated for holding ferrous items
- T-slotted tables
- Circumferential (rotary) axis - to allow marking around shafts, tubes and other circular components
- Standard label fixture - simple manually operated label fixture
- External start / stop counter
- External foot trigger
- Automatic tag/plate feeder - electric or pneumatic fixture for automatically loading, clamping, marking and ejecting name plates and labels
- Stylus options - Solid carbide styli with different length and different tip angles
- Electric Z axis
- Pneumatic depth mark

### Technical drawing



## [ Marking products ]

## Dot marking machine

### Dot marking machine PortaDot

Our dot marking machine PortaDot 5025 is a portable, fully programmable dot marking machine for use in all environments where bringing the marking device to the work piece is a prerequisite. Uncompromising build quality and lightweight design ensure the Portadot 5025 portable marking system is suitable for use in almost any environment.

The marking head is ergonomically formed and - weighing only 2.3 kg - ensures operator fatigue is minimized while productivity is maximized. The patented aluminium marking head protected in a tough polymer chase allows the Portadot 5025 to be used in most industrial environments. With this portable dot marking machine, you will no longer need to transport heavy items requiring marking to the machine.

The PortaDot is easy to use out of the box. The operator will be able to program layouts after a few minutes, the functional software ensures operator training is minimized. The multilingual user interface facilitates the creation and administration of layouts. This dot marking machine can be operated as a stand alone machine or networked. For the networked usage, Windows-based software solutions are available. However, the PortaDot is delivered normally with the controller 3000 using only standard electric

### Marking area and layouts

With this marking machine you will be able to create and mark various layouts up to a maximum size of 50x25 mm. Serial numbers, time and date, logos and graphics can be integrated easily. Up to 1.350 layouts can be stored in the Controller 3000.

With the trial run feature, you can rapidly check the layouts before the part is marked. Each single line within the layout can be marked while the machine outlines the marking position on the part itself.

The PortaDot is supplied either as a stand-alone marking machine (with which controller 3000) or with a Windows-based software.

### Controller 3000

The separate 3000 controller protects electronics from shock loading of mechanical marking operation. This controller comes with a durable integrated membrane keyboard and LCD linked function keys. The very large graphical display is embedded also in the controller.

The menu system software is very simple to use and offers a trial run feature. Advanced features like serial numbering, passwords, arc marking, time/date and logo marking are easy to integrate in your layouts. Various communication options and I/O are available. A wide range of options make this dot marking machine even more flexible.



### Technical details:

- Marking area: 50 x 25 mms
- Character size: 0.15 - 24.9 mm (in 0.15 mm of steps)
- Standard fonts: 5x7, 7x9, Varidot, TTF writings
- Memory capacity: up to 1350 layouts
- Weight: Marking head 2.3 kg, Controller 10 kg
- Power supply: 220 V, 50 hertz
- Windows software available

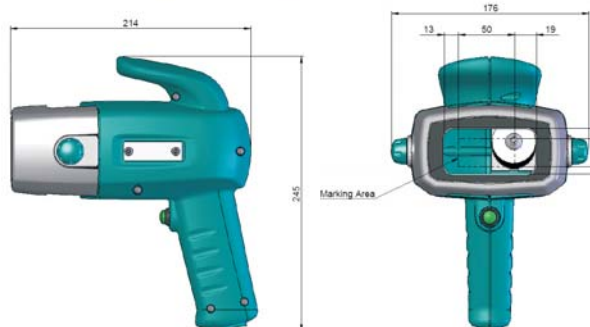
### Additional options

- Windows software MarkMaster or MarkMaster advanced
- Module TCP/IP Ethernet
- Base and Column for bench mounted application
- External start / stop counter
- Extra stylus - replacement stylus
- V-face plate for marking along circular components
- pneumatic depth mark
- 6 m umbilical cable
- Spring balance and bracket for ease of use

Advanced features of the MarkMaster Advanced are:

- Support of all TTF fonts
- Database connectivity for marking data queries
- Database connectivity for duplicate data checking
- Security password features
- Data logging for marking report generation

### Technical drawing



## [ Marking products ]

## Dot marking machine

### Dot marking machine PortaDot 130-30

The PortaDot 3000 130 is a professional portable dot mark machine for the hardest marking requirements. This marking tool has a high torque motor, precision lead screws and robust components in a steel housing for very fast and accurate marking. This powerful electromagnetic dot marking machine requires no air supply, just one standard electrical power supply is needed. Deep permanent marks and a high consistency of marking depth can be achieved, you can mark most engineering materials, metals and plastic to 62 HRc steel.

The quality of the marking is excellent, highest marking legibility of numbers and letters, company logos and Data Matrix marks can be achieved.

This dot marking machine is used primarily for the marking of heavy and bulky work pieces where a transport of the work piece to the marking unit is too costly or time consuming.

The PortaDot 3000 130 is delivered normally with the controller 3000 and needs for the company merely electric stream (220 V, 50 hertz).

### Marking area and layouts

With this marking machine you will be able to create and mark various layouts up to a maximum size of 130x30 or 130x40 mm. Serial numbers, time and date, logos and graphics can be integrated easily. Up to 1.350 layouts can be stored in the Controller 3000.

With the trial run feature, you can rapidly check the layouts before the part is marked. Each single line within the layout can be marked while the machine outlines the marking position on the part itself.

The PortaDot is supplied either as a stand-alone marking machine (with which controller 3000) or with a Windows-based software.

### Controller 3000

The separate 3000 controller protects electronics from shock loading of mechanical marking operation. This controller comes with a durable integrated membrane keyboard and LCD linked function keys. The very large graphical display is embedded also in the controller.

The menu system software is very simple to use and offers a trial run feature. Advanced features like serial numbering, passwords, arc marking, time/date and logo marking are easy to integrate in your layouts. Various communication options and I/O are available. A wide range of options make this dot marking machine even more flexible.



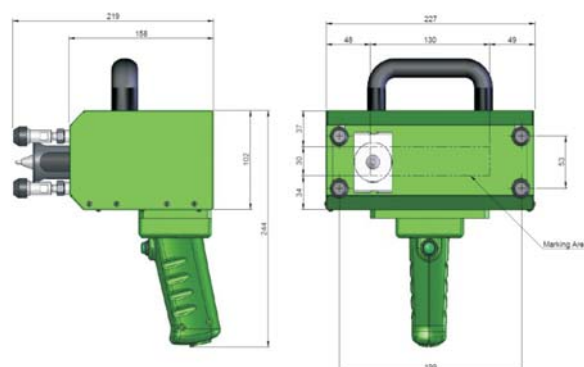
### Technical details:

- Marking area: 130x30 or 130x40 mms
- Character size: 0.30 - 29.9 mm (in 0.30 mm of steps)
- Standard fonts: 5x7, 7x9, Varidot, TTF writings
- Memory: up to 1350 layouts
- Weight: Marking head: 5 kg, Controller: 10 kg
- Power supply: 220 V, 50 hertz
- Windows software: optionally possibly

### Additional options

- Windows software MarkMaster or MarkMaster advanced
  - Module TCP/IP Ethernet
  - Base and Column for bench mounted application
  - External start / stop counter
  - Extra stylus - replacement stylus
  - V-face plate for marking along circular components
  - pneumatic depth mark
  - 6 m umbilical cable
  - Spring balance and bracket for ease of use
- Advanced features of the MarkMaster Advanced are:
- Support of all TTF fonts
  - Database connectivity for marking data queries
  - Database connectivity for duplicate data checking
  - Security password features
  - Data logging for marking report generation

### Technical drawing





## [ Marking products ]

## Dot marking machine

### Dot marking machine PortaDot 100-75

Our dot marking machine PortaDot 100-75 is a portable, fully programmable dot marking machine for use in all environments where bringing the marking device to the work piece is a prerequisite. Uncompromising build quality and lightweight design ensure the Portadot 100-75 portable marking system is suitable for use in almost any environment.

The PortaDot 100-75 is easy to use out of the box. The operator will be able to program layouts after a few minutes, the functional software ensures operator training is minimized. The multilingual user interface facilitates the creation and administration of layouts. This dot marking machine can be operated as a stand alone machine or networked. For the networked usage, Windows-based software solutions are available. However, the PortaDot is delivered normally with the controller 3000 using only standard electric power supply (220 V, 50 Hz).

For deep marking is needed (up to 1.5 mm in mild steel), a pneumatic version is recommended.

### Marking area and layouts

With this marking machine you will be able to create and mark various layouts up to a maximum size of 100x75 mm. Serial numbers, time and date, logos and graphics can be integrated easily. Up to 1.350 layouts can be stored in the Controller 3000.

With the trial run feature, you can rapidly check the layouts before the part is marked. Each single line within the layout can be marked while the machine outlines the marking position on the part itself.

The PortaDot is supplied either as a stand-alone marking machine (with which controller 3000) or with a Windows-based software.

### Controller 3000

The separate 3000 controller protects electronics from shock loading of mechanical marking operation. This controller comes with a durable integrated membrane keyboard and LCD linked function keys. The very large graphical display is embedded also in the controller.

The menu system software is very simple to use and offers a trial run feature. Advanced features like serial numbering, passwords, arc marking, time/date and logo marking are easy to integrate in your layouts. Various communication options and I/O are available. A wide range of options make this dot marking machine even more flexible.



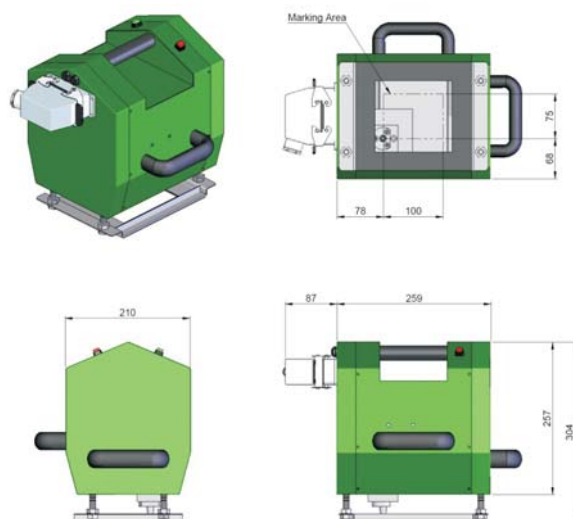
### Technical details:

- Marking area: 100 x 75 mm
- Character size: 0.18 - 74.9 mm (in 0.18 mm of steps)
- Standard fonts: 5x7, 7x9, Varidot, TTF writings
- Memory: up to 1350 layouts
- Weight: Marking head: 12 kg, Controller: 10 kg
- Power supply: 220 V, 50 hertz
- Windows software: optional
- Air pressure connection possibly

### Additional options

- Windows software MarkMaster or MarkMaster advanced
- Module TCP/IP Ethernet
- Base and Column for bench mounted application
- External start / stop counter
- Extra stylus – replacement stylus
- V-face plate for marking along circular components
- Pneumatic depth mark
- 6 m umbilical cable
- Spring balance and bracket for ease of use

### Technical drawing



## [ Marking products ]

## Dot marking machine

### Dot marking unit InDot - Integrator

The Marktronic 3000 Integrator range are fully programmable dot marking machines which can be integrated into any existing industrial/commercial application.

The compact design has been created with ease of use in mind. High functionality embedded software or PC Windows option ensures operator training is minimized and production efficiency is maximized. The multilingual interface allows users to choose between different character fonts and type sizes as well as angular and arc marking, serial numbers, date and time marking. The lead screw driven marking head guarantees dot precision second to none, making the dot marking Integrator range capable of meeting the rigorous demands of 2D Data Matrix Code marking.

The Integrator range is electrically actuated requiring no compressed air supply. Therefore, these dot marking machines are significantly quieter than pneumatically operated dot peen systems. The programmable force feature provides accurate marking depth control. With this machine, you can easily mark all engineering materials, plastics and steel up to 62 HRC. The precision ball screw driven marking head guarantees dot precision unmatched on other systems.

The Indot dot marking unit comes with a controller 3000. However, in connection with a PC system, a huge number of operation modes are possible. A connection with a PC or a network is simply possible over the RS232 connection as well as through a TCP/IP port. The dot marking units "InDot" are available with four different marking areas. Also the variation as compressed air powered engraving unit (InScribe) with which the text is shown as a continuous line is possible.

### Marking area and layouts

The dot marking machine of the series "InDot" can be supplied with four different marking areas. The standard sizes are 50x25 mm, 60x60 mm, 150x150 mm as well as 130x40 mm. Serial numbers, time and date, logos and graphics can be integrated easily. Up to 1.350 layouts can be stored in the Controller 3000.

With the trial run feature, you can rapidly check the layouts before the part is marked. Each single line within the layout can be marked while the machine outlines the marking position on the part itself. The "Indot" dot marking machine is supplied either as a stand-alone marking machine (with which controller 3000) or with a Windows-based software.

### Controller 3000

The separate 3000 controller protects electronics from shock loading of mechanical marking operation. This controller comes with a durable integrated membrane keyboard and LCD linked function keys. The very large graphical display is embedded also in the controller.

The menu system software is very simple to use and offers a trial run feature. Advanced features like serial numbering, passwords, arc marking, time/date and logo marking are easy to integrate in your layouts. Various communication options and I/O are available. A wide range of options make this dot marking machine even more flexible.



### Technical details:

- Marking area: 50x25, 60x60, 150x150 and 130x40 mm
- Character size: 0.18 - 49.9 mm (in 0.18 mm of steps)
- Standard fonts: 5x7, 7x9, Varidot, TTF writings
- Memory: up to 1350 layouts
- Weight: Controller: 10 kg
- Power supply: 220 V, 50 hertz
- Windows software: optional
- Air pressure connection possibly

### Additional options

- Windows software
- Module TCP/IP Ethernet
- Compact electric Z axis with AutoSense
- Pneumatic approach axis
- Digital approach axis
- Custom designed fixtures on request
- Footswitch start pedal
- Replacement stylus
- Pneumatic depth mark
- Remote Start/Stop box

### Technical drawing

