

## [ Marking products ]

Steel types or also called interchangeable steel types are sharp faced marking stamps which mark a readable imprint in metal and plastic components. Each steel type has standardized blanks which suit perfectly into hand holders and holders for marking presses.

Marking with steel types and holders saves time – in just one stroke, a series of letters and figures can be indented in a product or name plate with uniform legibility. This is the most simple solution for multi-character marking using standard, off the shelf type and holders. Our steel types are available in various versions, each with their own blank size.

Our steel types are available as single pieces in different versions and sizes as well as complete fount sets of 100 assorted types with or without hand holder. The size of the characters may vary from 1.5 to 10.0 mm, special fonts (Cyrillic...), special dimensions and special character size above 10.0 mm are made after drawing or after sample.

Our steel types fit into type holders, which are designed to provide accurate type location and positive locking combined with ease of use and durability. The type is secured in place by means of a grub screw (Allen key supplied). Those holders accept the range of Pryor types, Imperial types and Euro types and are available in various sizes with various capacities.

The steel types of the brand PRYOR are made out of high-quality Sheffield tool steel and are hardened under exact conditions to 59-63 of Rockwell "C".

On customer demand, we also manufacture all kinds of custom engraved dies and special types like logo stamps, symbol stamp (f.e.: CE signs), block types or segmental types.

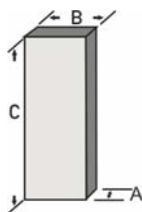
### PRYOR Stahltypen - Abmessungen

According to the character size, each blanks have different, normed dimensions. Beside our standard range, PRYOR priority and imperial steel types, our range comprises additional brands like EURO-types or types TH-100 and THS-100.

Please find the exact dimensions of each blank in our table bellow.

Please note, that the character size must be measured on top of the engraving.

Ausführung: scharfkantig  
Ergebnis: lesbar, vertieft



## Interchangeable steel types



### Advantages

- Simple solution for multi-character marking
- Standard blanks for comfortable replacements
- Suitably for most industrial applications
- Economic and favourable marking
- Easy to handle
- Steel types can be re-ordered in piecewise
- Production is certificated after ISO 9001:2000
- Steel types piecewise or in sets to 100 pieces with or without hand holders available
- Steel type set are shipped in a robust plastic box with compartments for each types
- Any custom made engraved types possible

### Applications

- Marking of identification labels
- Manual marking of profiles, work pieces, components
- Also useable in assembly lines (car industry, investment construction)
- Marking of production loads
- **Fuctional marking:**  
marking of gauges, micrometers, drilling machines, depth rods
- **Identification marking:**  
marking of part numbers, selection data, assay marks
- **Traceability marking**
- **Legislative marking:**  
marking of patent number, voltage, country of origin

	PRIORITY			IMPERIAL			EURO-TYPE			TH-100			THS-100		
Size	A	B	C	A	B	C	A	B	C	A	B	C	A	B	C
1,00	1,60	3,20	15,87	1,60	6,40	22,20	1,50	4,00	19,00	-	-	-	-	-	-
1,50	1,60	3,20	15,87	1,60	6,40	22,20	1,50	4,00	19,00	-	-	-	-	-	-
2,00	2,00	6,40	19,05	2,00	6,40	22,20	2,00	4,00	19,00	2,00	4,00	15,0	3,00	6,00	32,00
2,50	2,50	6,40	19,05	2,50	6,40	22,20	2,50	6,00	19,00	-	-	-	-	-	-
3,00	3,20	6,40	19,05	3,20	6,40	22,20	3,00	6,00	19,00	3,00	6,00	20,00	3,00	6,00	32,00
4,00	4,00	8,00	19,05	4,00	8,00	22,20	4,00	8,00	19,00	3,00	6,00	20,00	4,00	8,00	32,00
5,00	4,80	8,00	19,05	4,80	8,00	22,20	5,00	8,00	19,00	4,00	8,00	25,00	4,00	8,00	32,00
6,00	6,40	9,50	19,05	6,40	9,50	19,05	-	-	-	4,00	8,00	25,00	5,00	10,00	32,00
8,00	-	-	-	-	-	-	-	-	-	5,00	10,00	25,00	5,00	10,00	32,00
10,00	9,50	16,00	25,40	9,50	16,00	25,40	-	-	-	6,00	12,00	30,00	6,00	12,00	32,00
12,00	-	-	-	-	-	-	-	-	-	8,00	15,00	30,00	8,00	15,00	32,00
15,00	-	-	-	-	-	-	-	-	-	10,00	20,00	30,00	10,00	20,00	32,00

## [ Marking products ]

### PRYOR Steel type fount sets

Fount sets of the brand PRYOR – Priority are marking tools for various applications in the industry. One set comprises 100 assorted steel types PRYOR – Priority as well as 12/6 spacers (depending on the size of the character). The number of each single type corresponds to the average expected frequency of a usual standard industrial company. A fount set can be delivered with or without the corresponding type holder offering more flexibility to the customer.

Steel types of the brand PRYOR – PRIORITY are high quality marking tools for many different applications in the industry. Each steel type is made exactly out of high-quality chrome steel with standardized blank dimensions. To each size, a suitable hand holder is available from stock. All standard stamps are nickel-plated and protected therefore against rust.

Each fount set comprises 100 pcs assorted steel types (A-Z, 0-9, punctuation marks) as well as 6 or 12 pieces of spacers. The types are packed in a strong plastic or wooden box with compartments for each single type.

### PRYOR interchangeable steel types - low stress

Steel types of the brand PRYOR – LOW STRESS are high quality marking tools for special applications in the industry. Each steel type is made exactly out of high-quality chrome steel with standardized blank dimensions. To each size, a suitable hand holder is available from stock. All standard stamps are nickel-plated and protected therefore against rust. In contrast to the standard steel types PRIORITY, low stress steel types are engraved with a round faced character to reduce the stress levels introduced into the component being marked. These marking tools are produced especially for the oil and gas industry as well as in the aircraft industry and for power plants and similar applications.

Engraving: rounded nose  
Result: readable



### PRYOR interchangeable steel types - dot stress

Steel types of the brand PRYOR – DOT STRESS are high quality marking tools for special applications in the industry. Each steel type is made exactly out of high-quality chrome steel with standardized blank dimensions. To each size, a suitable hand holder is available from stock. All standard stamps are nickel-plated and protected therefore against rust. In contrast to the standard steel types PRIORITY, dot stress steel types are engraved with a round faced character to reduce the stress levels introduced into the component being marked.

The variation "dot stress" introduces even lower stress levels than the steel types "low stress" and enhance fatigue properties. Marking stamps "dot stress" produce a character with similar rounded nose formation to low stress but with the added benefit of impressing the character in a dot formation. Please see the difference on the following illustration.

These marking tools are produced especially for the oil and gas industry as well as in the aircraft industry and for power plants and similar applications.

As a distributor of the company PRYOR we can always deliver all letters, figures, as well as the most important punctuation marks in all available sizes in 3.0 and 5.0 mm from stock. Custom made engraving types with individual logos, letterings or symbols can be supplied after drawing or sample.

Ausführung: Radius  
Ergebnis: lesbar, vertieft



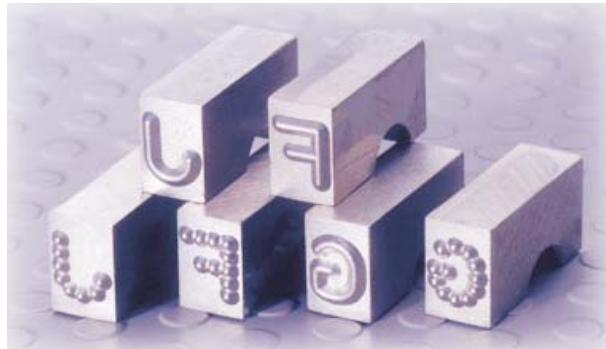
## Interchangeable steel types



### Content PRYOR Fount set



### Steel types - low stress and dot stress



### Fount set with holder

