

[Marking products]

Percussion press

For many marking processes, a press is needed for economic indent marking. We offer a wide range of hand operated and powered percussion presses. Designed with the operator in mind, these presses are

For many marking processes, a press is needed for economic indent marking. We offer a wide range of hand operated and powered percussion presses. Designed with the operator in mind, these presses are easy to operate with high productivity yet low initial costs.

Our hand operated percussion presses are easy and safe to operate. These presses can be used anywhere in the factory, guarding is not legally required in most countries. Our percussion presses are easy and save to operate, service and maintain.

Marking is achieved by compressing and releasing a spring loaded ram using either the hand lever or pneumatic air cylinder. The spring compression (and therefore marking load) can be easily and quickly adjusted. At the end of the lever travel the spring is automatically released and the marking operation performed.

Percussion press MB 15 & MB 15V

Our hand operated percussion press mod. MB 15 is our smallest press in this range. With a maximum load of 500 kg, this marking press is suitable for simple marking tasks. Standard applications are marking of plastics, marking of packaging (especially in the pharmaceutical industry the stamping of drug boxes) and more.

Marking is achieved by compressing and releasing a spring load ram using the hand lever. At the end of the lever travel the spring is automatically released and the marking operation performed. The spring compression – and therefore the marking load – can be easily and quickly adjusted from 0 to maximum load. Once the spring compression is adjusted, you will reach a consistent depth of marks. Due to the pre-clamping action of the press, material deformation can be prevented easily.

Percussion press MB20 & MB20V

Our hand operated percussion press mod. MB20 is our best-selling bench mounted marking press.

With a marking load of maximum 3000 kg (30 kN), this press allows already marking of various metals and plastic components. Especially for name plates and inventory plates, this machine has a great cost/performance ratio.

Marking is achieved by compressing and releasing a spring load ram using the hand lever. At the end of the lever travel the spring is automatically released and the marking operation performed. The spring compression – and therefore the marking load – can be easily and quickly adjusted from 0 to maximum load. Once the spring compression is adjusted, you will reach a consistent depth of marks. Due to the pre-clamping action of the press, material deformation can be prevented easily.

Prägepresse MB32 bzw. MB35V

Our hand operated percussion press mod. MB32 is our most powerful manual marking press. With a marking load of 6500 kg (65 kN), most industrial marking tasks can be performed with this press.

Marking is achieved by compressing and releasing a spring load ram using the hand lever. At the end of the lever travel the spring is automatically released and the marking operation performed. The spring compression – and therefore the marking load – can be easily and quickly adjusted from 0 to maximum load. Once the spring compression is adjusted, you will reach a consistent depth of marks. Due to the pre-clamping action of the press, material deformation can be prevented easily.



Mod. MB32V



Mod. MB20

Advantages

- Pre-clamping action prevents material deformation
- Maximum sensitivity and accuracy
- Consistent depth of mark
- Exact pressure setting from 0 kN up to the maximum
- Easy accessibility for different sizes
- High production rates
- Enormous range of accessories
- Low price – for small and medium production series
- Can also be used for riveting, bending, forming and other non-marking operations

Applications

Our percussion presses can be used anywhere in the factory for numerous marking processes and tasks. Our presses are very easy and safe to operate, no guarding is necessary in most countries.

Some examples are:

- Marking of type plates or inventory plates
- Stamping of machine parts
- Marking with high loads
- Marking of components in assembly lines
- Manual stamping of large, heavy or bulky components

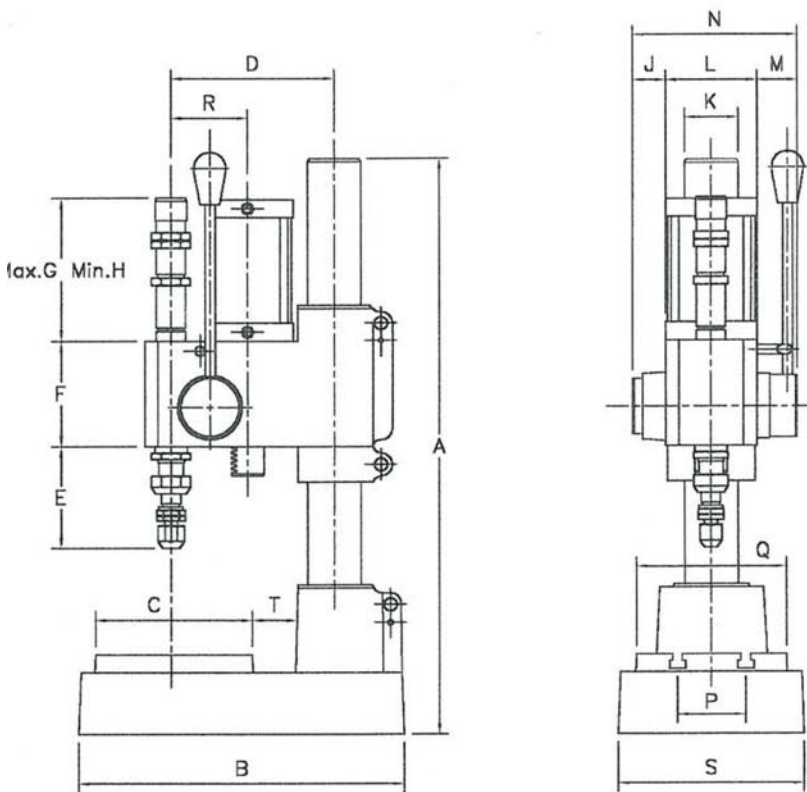
[Marking products]

Percussion press

Pneumatic percussion press - Technical details

	MB 15V	MB 20V	MB 32V
Marking load	600 kg (6 kN)	3500 kg (35 kN)	7500 kg (75 kN)
Daylight	0 - 175 mm	0 - 265 mm	0 - 300 mm
Net weight	14.5 kg	53 kg	162 kg
Shank - diameter	8 mm	10 mm	16 mm
Shank - length	32 mm	38 mm	48 mm
T-nut (DIN 650)	6 mm	8 mm	12 mm
Overall stroke	22 mm	60 mm	80 mm
Pre-travel	8 mm	18 mm	22 mm
Useable stroke	0 - 14 mm	0 - 42 mm	0 - 58 mm
Air pressure (max)	10 bar	10 bar	10 bar
Air consumption / stroke	0.18dm ³ (4bar)	1.05dm ³ (6bar)	1.67dm ³ (6bar)

Pneumatic percussion press - Drawing



Zeichnungen und technische Daten können ohne Avisierung verändert werden.

Pneumatic percussion press - Dimensions

	A	B	C	D	E	F	G	H	K	J	L	M	N	P	Q	R	S	T
MB15V	375	225	110	113	48	67	121	91	36	22	58	30	110	50	110	170	240	30
MB20V	630	360	170	180	120	116	162	132	60	38	102	45	185	80	170	85	200	50
MB32V	840	503	240	260	155	180	340	320	100	40	170	52	262	120	240	112	300	70

(Alle Angaben in mm)



Mod. MB32V



Mod. MB20

Marking spring

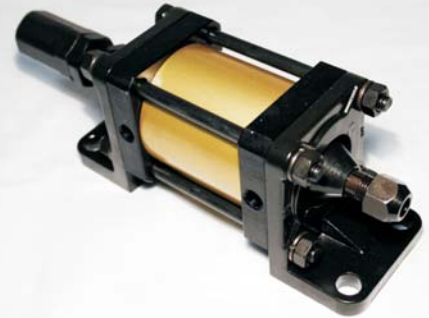


[Marking products]

Pneumatically powered percussion presses are suitable for fitting into automated production lines and machines. Due to its construction, our marking unit can be mounted in any position within the assembly line.

Marking is achieved by compressing and releasing a spring load ram using compressed air. 3 different sizes of marking units are available in our range.

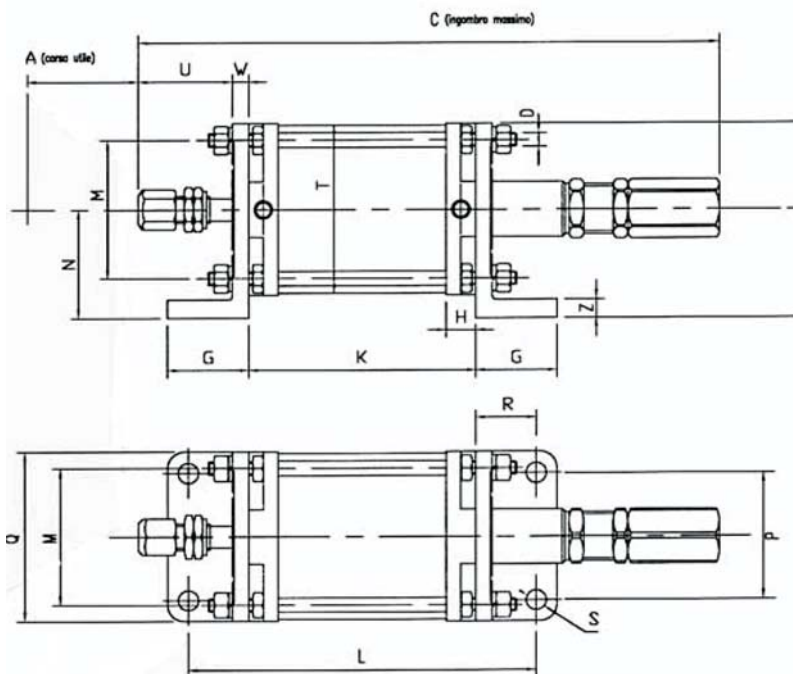
Percussion press



Pneumatic marking unit - Technical details

	MB 19V	MB 21V	MB35V
Marking load	600 kg (6 kN)	3500 kg (35 kN)	7500 kg (75 kN)
Net weight	2 kg	10 kg	38 kg
Shank - diameter	8 mm	10 mm	16 mm
Shank - length	32 mm	38 mm	48 mm
Overall stroke	32 mm	67 mm	110 mm
Pre-travel	8 mm	18 mm	25 mm
Useable stroke	0 - 24 mm	0 - 49 mm	0 - 85 mm
Air pressure (max)	10 bar	10 bar	10 bar
Air consumption / stroke	0.22dm ³ (4bar)	1.05dm ³ (6bar)	2.73dm ³ (6bar)

Pneumatic marking unit - Drawing



Marking result



Pneumatic marking unit - Dimensions

	A	C	D	E	G	H	K	L	M	N	P	W	R	S	T	U	W	Z
MB19V	48	260	M8	78	45	14	88	158	50	45	45	65	35	10.5	32.5	45	10	10
MB21V	88	407	M10	130	55	20	151	238	90	73	90	115	43	14	73	65	12	12
MB35V	105	841	M16	216	86	30	232	268	140	125	140	180	66	17	92	134	27	25

(Alle Angaben in mm)

[Marking products]

Special marking press

Rack & pinion press

Rack & pinion presses are available either for manual or pneumatic operation.

In contrast to percussion presses, a rack & pinion press does not have a spring load. The marking load is achieved by pulling a lever at the side of the press. A rotary movement is converted this into a linear movement.

This kind of marking has several advantages. First, the marking load can be determined sensitively by the operator. Secondly the duration of the marking pressure can be freely chosen by the operator, which is necessary for some marking proceedings like hot foil marking or other applications.

This marking press is available as hand operated or pneumatically powered press. The pneumatic press will be supplied with twin security buttons to meet CE regulations.

Maximum daylight is adjustable without the need for tools, which allows for a variety of different shaped components to be accommodated quickly and easily. An enormous range of accessories (steel types, machine holders, numbering heads) makes this press even more flexible.

Hot foil marking press

Hot marking machines are marking machines with an adjustable thermostat to regulate the temperature to meet the requirements of the material to be marked.

In addition, this hot foil marking press can be equipped with a ribbon feed system for colourful inscriptions.

Hot marking is a very popular way to brand your products and articles, especially for leather, paper, plastic, wood, fabric and similar products.

For this marking machine, an enormous range of marking tools is available. Due to the technique, typeholders are manufactured from steel or brass. This creates the best heat conductivity to the types during the marking press. Various standard type holders are available. For hot marking, you can use sharp faced or flat faced characters.

Cold marking press

Cold marking presses work like a rack & pinion marking press. In contrast to the rack & pinion press, these machines are equipped with an extra ribbon feed system for cold marking foils.

Our cold marking presses are available hand operated or pneumatically powered.

MB20P



MB20E



[Marking products]

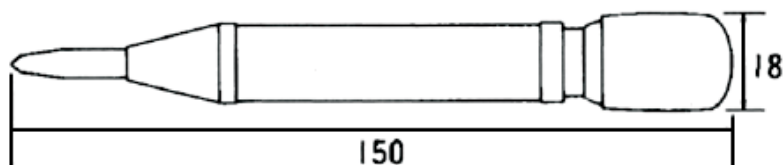
Micro center punch "Micro"

Micro center punches are portable marking units. The internal impact force is triggered by pressure using the palm of the hand.

The power of this marking tool is limited to 50 kg, which is suitable for various small scale marking tasks.

Our micro punch is practical, versatile and quick. Each punch is available with various special marking symbols are letters or numbers in 2.5 character size. The available symbols are shown in the table. Special logos can be supplied on request with a maximum character size of 3.0 mm.

Micro center punch "Micro" - Drawing



Special marking press



Available symbols

	1	2	3	4	5	6	7	8
A	□	♥	△	⊗	♠	○	△	⊗
B	⊕	⊖	⊗	⊘	⊙	⊚	⊛	⊜
C	⊝	⊞	⊟	⊠	⊡	⊢	⊣	⊤
D	⊥	⊦	⊧	⊨	⊩	⊪	⊫	⊬
E	⊭	⊮	⊯	⊰	⊱	⊲	⊳	⊴
F	⊵	⊶	⊷	⊸	⊹	⊺	⊻	⊼
G	⊽	⊾	⊿	⊿	⊿	⊿	⊿	⊿

Marking stamp



[Marking products]

Roller marking machine

Roll marking has several advantages over press marking in that it is possible with the appropriate tooling to mark both flat and round work pieces with the same machine.

You can mark cylindrical surfaces on a flat anvil fixture as well as on a twin roll fixture. Marking of thin walled tubular components is also possible with roller marking machines. Also flat work pieces can be marked with a roller die held and controlled in a geared roll carrier, where the work piece remains stationary.

Further advantages are related to the fact then when roll marking is used only a small amount of the inscription is in contact with the piece being marked. This means that the minimum marking load is required which in turn means less operator effort when using the marking press and less distortion of the piece being marked.

Roller marking machines can mark round work pieces with different diameters. According to diameter and application, different machines, either manually or electrically powered are available.

Roller marking machine



Manual roller marking machine - MB41M

The manual roller marking machines MB41M is the perfect machine to mark cylindrical components. These work pieces can either be solid or hollow with a diameter from 8 to 65 mm.

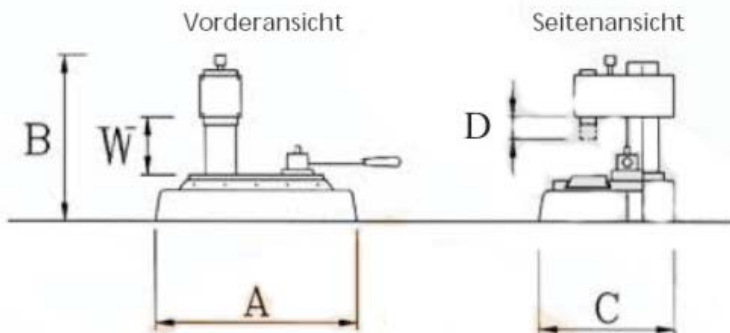
Solid cylindrical components are marked using a twin roll fixture, thin walled hollow parts are marked using mandrel support.

With this machine, numerous marking tools can be used. Steel types and machine holders, custom made engraved stamps and numbering heads are most suitable for our marking machine MB41.

Mod. MB41M

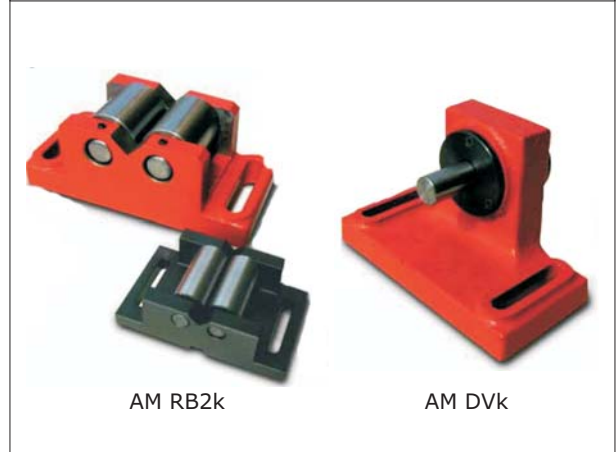


Manual roller marking machine - MB41M - Dimensions



					max.		max
A	B	C	D	W	DM	Weight	Stroke of slide
295	300	240	30	125	65	35	100
					(mm)	(kg)	(mm)

Accessories - MB41M



AM RB2k

AM DVk

[Marking products]

Electric roller marking machine - MB41E

The roller marking machine MB41E is the motorized version of the machine MB41M. This press has a geared motor connected to 380 V, 3 phases, 50 Hz. Our MB41E is bench mounted with twin push button for safety reasons. The twin push buttons are integrated in the bench.

Our MB41E is the perfect machine to mark cylindrical components in large scale. The work pieces can either be solid or hollow with a diameter from 8 to 65 mm. Solid cylindrical components are marked using a twin roll fixture, thin walled hollow parts are marked using mandrel support.

With this machine, numerous marking tools can be used. Steel types and machine holders, custom made engraved stamps and numbering heads are most suitable for our marking machine MB41.



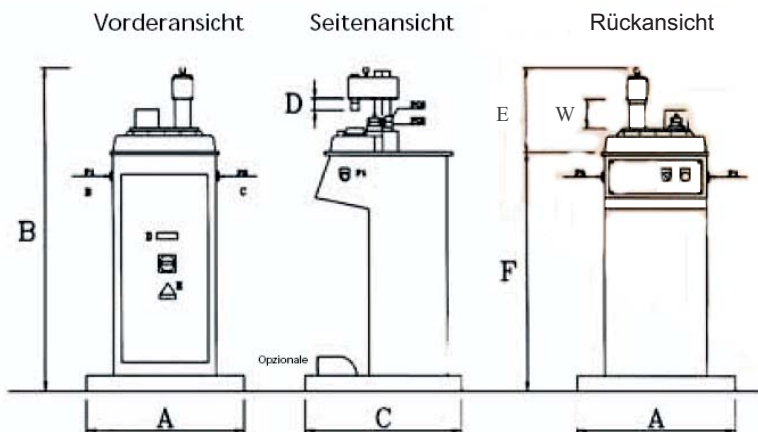
Roller marking machine



Accessories

- Twin roll fixture
- Mandrel support
- Steel types and type holders
- Numbering heads
- Custom made engraved dies

Marking result



A	B	C	D	E	F	W
600	1090	600	30	300	760	125
max			max.			
DM	weight	stroke of slide	motor			
65	110	100	380			
(mm)	(kg)	(mm)	(Volt)			

[Marking products]

Roller marking machine

Manual roller marking machine MB71M

The roller marking machine MB71M is a manually operated machine for the marking of cylindrical, conical or flat components. Cylindrical work pieces may have a diameter of up to 110 mm.

The depth of the mark is very simple to adjust. Even if the diameter differs a little, consistent depth of mark is achieved by spring washers, which are fitted in the table.

Solid cylindrical components are marked using a twin roll fixture, thin walled hollow parts are marked using mandrel support.

MB71M - Dimensions

A	B	C	D	W	max. DM	Weight	max. Stroke of slide
340	830	310	125	235	110	126	180
					(mm)	(kg)	(mm)

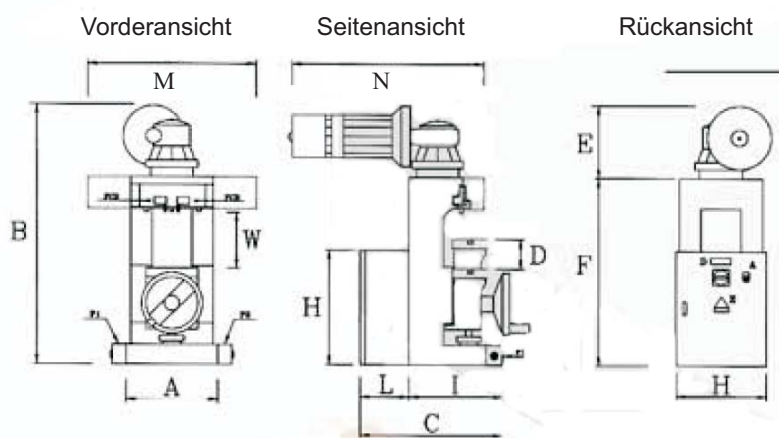
Electric roller marking machine MB71E

The roller marking machine MB71E is an electrically operated machine for the marking of cylindrical, conical or flat components. Cylindrical work pieces may have a diameter up to a maximum of 110 mm.

The depth of the mark is very simple to adjust. Even if the diameter differs a little, consistent depth of mark is achieved by spring washers, which are fitted in the table. This machine comes with a bench and two twin push buttons for a safe and efficient workflow.

Solid cylindrical components are marked using a twin roll fixture, thin walled hollow parts are marked using mandrel support.

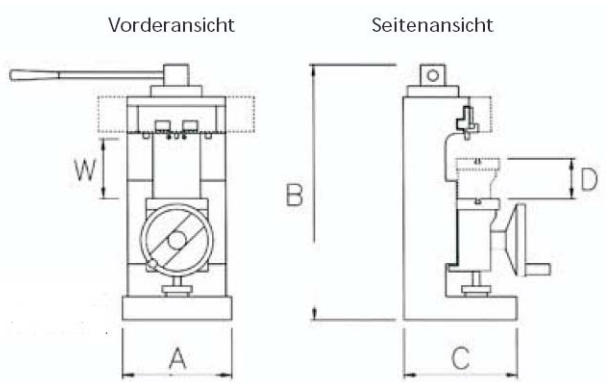
MB71E - Drawing



MB71E - Dimensions

A	B	C	D	E	F	G	H	I	L	M	N	W
360	1020	500	125	230	730	350	450	310	190	480	560	235
max. DM	Gewicht	Motor	Stroke of slide	max. Distance								
110	138	380	180	130								
(mm)	(kg)	(V)	(mm)	(mm)								

MB71M



MB71E



[Marking products]

Roller marking machine

Horizontale Abrollmarkiermaschine MB76E

The roller marking machines MB76E or MB76EP are designed to mark horizontally recumbent round work pieces, round parts and flanges up to a maximum diameter of 650 mm.

The loading and unloading of the work piece is carried out manually. A spring washer with adjustable resistance presses the work piece to be marked against the typeholder or marking tool. Please note, that the maximum length of text must not exceed 180 mm. For more information, you can use a multiline typeholder or marking tool. For even deeper marking you can repeat the same marking cycle several times.

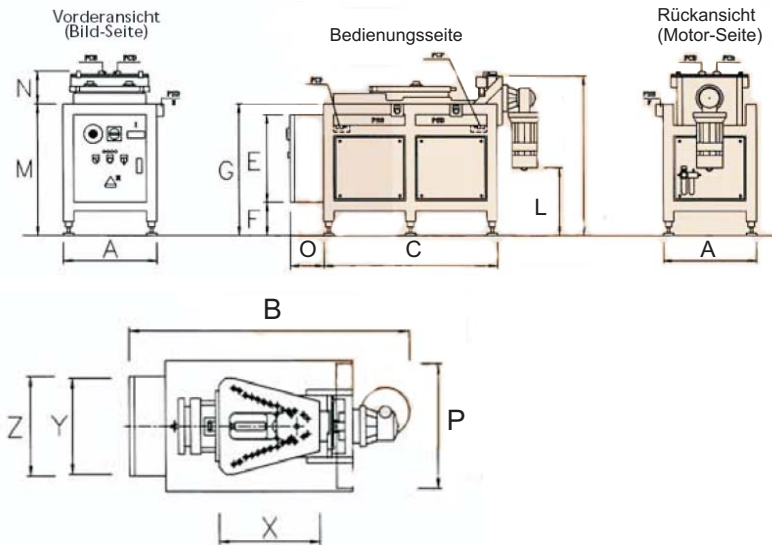
This electrically operated machine comes complete with twin push buttons mounted on the machine and is very easy to use. This roller marking machine is available in two versions. The MB76E is the standard electrically operated version, MB76EP is the electro-pneumatic version.

With this machine, numerous marking tools can be used. Steel types and machine holders, custom made engraved stamps and numbering heads are most suitable for our marking machine MB76E.

MB76EP



MB 76E - Drawing



MB76E (Top view)



MB76E + MB76EP - Dimensions

A	B	C	E	F	G	I	L	M	N	O	P	X	Y	Z	
530	1170	1000	500	190	750	910	380	750	190	190	480	470	350	440	
max.				max.											
DM	Weight	Motor	Stroke of slide	Distance											
600	360	380	290	130											
(mm)	(kg)	(V)	(mm)	(mm)											
A	B	C	E	F	G	I	L	M	N	O	P	X	Y	Z	
530	1170	1000	500	190	750	910	380	750	190	190	480	470	350	440	
max.				max.						Air-					
DM	Weight	Motor	Stroke of slide	Distance	Air-										
600	360	380	290	360	pressure										
(mm)	(kg)	(V)	(mm)	(mm)	(bar)										

[Marking products]

Roller marking machine

Special roller marking machine - MB76S

With the roller marking machine MB76 you can mark vertically positioned round components, rings, etc. up to a maximum diameter of 1000 mm.

The loading and unloading of the work piece is carried out manually. Please note, that the maximum length of text must not exceed 180 mm. For more information, you can use a multiline typeholder or marking tool. For even deeper marking you can repeat the same marking cycle several times.

The roller marking machine MB76 is available in 3 different versions:

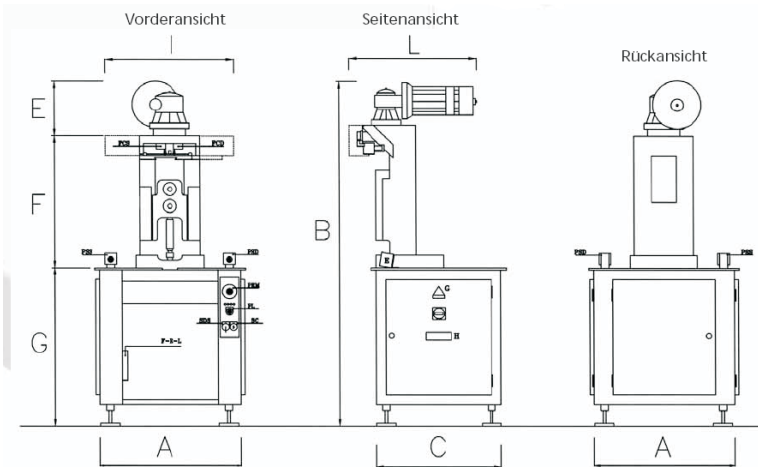
MB76M: Manual operation

MB76E: Electrically powered

MB76EP: Electro-pneumatically powered

This electrically operated machine comes complete with twin push buttons mounted on the machine and is very easy to use. The electro-pneumatically powered machine has a pneumatic feed of the part to the marking head. The vertical movement of this press is 22 mm.

Drawing



MB76SE - Dimensions

A	B	C	E	F	G	H	I	L	M	W
730	1785	650	280	685	820	-	480	560	-	-
max.			max.							
DM	Weight	Motor	Stroke of slide	Distance						
1000	300	380	180	130						
(mm)	(kg)	(V)	(mm)	(mm)						

MB76SEP - Dimensions

A	B	C	E	F	G	H	I	L	M	W		
730	1785	650	280	685	820	-	480	560	-	-		
max.			max.								Air-	
DM	Weight	Motor	Stroke of slide	Distance	Air-							
1000	300	380	180	130	pressure							
(mm)	(kg)	(V)	(mm)	(mm)	(bar)							

MB76S



MB76E (Side view)



[Marking products]

Roller marking machine

Twin roller fixture S2R

Twin roller fixture S2R

The twin roller fixture S2R is used on roller marking machines to rotate the workpiece to be marked about its own axis. The marking tool (machine holder with steel types or numbering head) causes the part to be rotated during the marking process

Twin roller fixture S2R Mini

The twin roller fixture S2R mini is similar to the fixture S2R but more suitable for smaller workpieces.

Twin roller fixture S2RV

The twin roller fixture S2RV is variable and adjustable to the exact diameter of the parts to be marked. With this tool, the workpiece may rotate about its own axis.

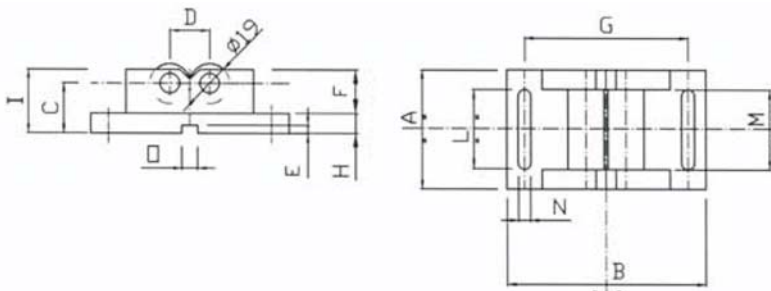
Roller support S3R

This roller support is used only on roller marking machines for endless imprints. The rollers and guides of this tool are designed for continuous marking. The center roller can be engraved to allow marking on two faces simultaneously.

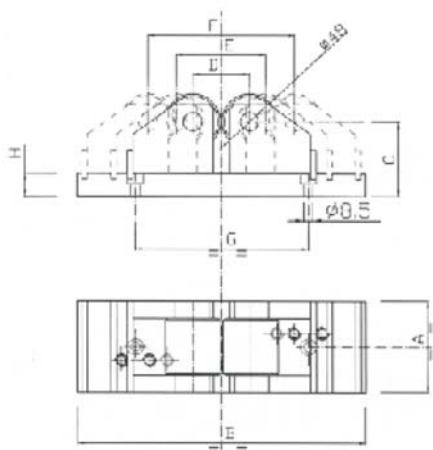
Mandrel fixture S1R

Mandrel fixtures are fixtures with free running mandrels supported in needle bearings allow thin walled components to be supported internally to prevent friction and distortion under the marking load. The mandrels are quickly interchangeable to accept a range of bore sizes. Special fixtures can be manufactured to accept conical or tapered workpieces.

S2R - Drawing



S2Rv - Drawing



S2R und S2R mini



S2RV



S3R

