

## Steel hand stamps - Punch

## Marking products

Standard hand stamps or punches are the cheapest variation to marking letter, figures, signs and symbols manually on plastic, metal, leather and other materials. At its simplest, the mark can be applied to the component by striking the punch by hammer.

Our steel stamps are made of high quality chrome steel and are hardened under exact conditions. In contrast to other punches no poor quality steel is used for these products. This leads to a long durability, a maximum in working security and an unbeatable cost/performance ratio. Hand stamps are available either in sets of A-Z or 0-9. Single stamps are also available in various sizes.

Our punches are available in different qualities. Beside the standard series "premium" we offer steel stamps also in reverse, heavy duty "Goliath", with radius engraving "Low stress" and in dot/radius engraving "Dot stress". Our punches are available in many standard sizes from 1.0 to 12.5 mm. Additional we manufacture hand stamps in various sizes up to 50 mm size on demand.

Beside the standard sets A-Z and 0-9 we offer a wide range of custom made engraved dies and stamps including an artwork and design service for die inscriptions. The assortment includes also symbol stamps (CE-sign, ...), welder's inspection stamps, flymarks, logotype dies, graduation dies, cigarette printing die, round die, embossing die, coining die, roller die and coding dies.



### Advantages

- + Quality controlled Sheffield Chromium tool steel
- + Precise heat treatment (58 – 62 R.C.) at the character and 32-40 R.C. at the striking end.
- + Production is certificated - ISO 9001:2000
- + Stamp sets (A-Z, 0-9) are packed in a strong plastic box with separate compartments for each stamp to allow rapid selection
- + Nickel plated stamp Suitably for any industrial applications Wide range available
- + Standard and heavy duty for general use, reverse for mould and die applications, ministress and dotstress for low stress work
- + Special punch safety grip available
- + Favourable price - the cheapest way to mark your products Great cost/performance ratio

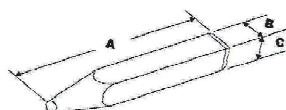
### PRYOR punch set "Premium"

Our punches "PREMIUM" are our standard marking stamp for general use. All punches have sharp faced characters and are available in various sizes. These stamps are ideal for a whole range of marking processes on anything from aluminium to stainless steel.

Our punches are manufactured of high quality Chromium tool steel. All stamps are hardened precisely, giving a hardness of 58-62 R.C. at the character end and 32-40 R.C. at the striking end. Please note, that the hardness of the component should not exceed 40 R.C.

All punch sets are delivered in a strong plastic box with separate compartments for each stamp to allow rapid selection. The production of our standard punches is certificated after ISO 9001:2000. For special security requirements there is a special security holder available.

Hand stamps of the series "Premium" are available as a single stamp as well as in sets of A-Z and 0-9 in different sizes. All standard punches are nickel-plated and protected therefore against rust.



Engraving: sharp faced  
 Marking: readable



| SH (mm) | Abmessung in mm |      |      | Verfügbarkeit |         |         |
|---------|-----------------|------|------|---------------|---------|---------|
|         | A               | B    | C    | Einzel        | Set 0-9 | Set A-Z |
| 1.0     | 63.5            | 6.35 | 6.35 | √             | √       | √       |
| 1.5     | 63.5            | 6.35 | 6.35 | √             | √       | √       |
| 2.0     | 63.5            | 6.35 | 6.35 | √             | √       | √       |
| 2.5     | 63.5            | 6.35 | 6.35 | √             | √       | √       |
| 3.0     | 63.5            | 6.35 | 6.35 | √             | √       | √       |
| 4.0     | 70.0            | 9.5  | 9.5  | √             | √       | √       |
| 5.0     | 70.0            | 9.5  | 9.5  | √             | √       | √       |
| 6.0     | 70.0            | 9.5  | 9.5  | √             | √       | √       |
| 8.0     | 89.0            | 12.7 | 12.7 | √             | √       | √       |
| 10.0    | 89.0            | 14.3 | 14.3 | √             | √       | √       |
| 12.5    | 89.0            | 19.0 | 19.0 | √             | √       | √       |

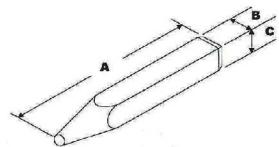


**Steel hand stamps - Punch** Marking products

**PRYOR punch set "Revers"**

In contrast to the standard marking stamp "Premium", reverse punches are available for use when a negative impression is required, particularly in forging or moulding applications or to produce a positive or readable inscription on a moulded or cast component.

Our punches are manufactured of high quality Chromium tool steel. All stamps are hardened precisely, giving a hardness of 58-62 R.C. at the character end and 32-40 R.C. at the striking end. Please note, that the hardness of the component should not exceed 40 R.C.



Engraving: sharp faced  
 Result: reverse



| Size (mm) | Dimensions (mm) |      |      | Availability |         |         |
|-----------|-----------------|------|------|--------------|---------|---------|
|           | A               | B    | C    | Single       | Set 0-9 | Set A-Z |
| 1.5       | 63.5            | 6.35 | 6.35 | √            | √       | √       |
| 2.0       | 63.5            | 6.35 | 6.35 | √            | √       | √       |
| 3.0       | 63.5            | 6.35 | 6.35 | √            | √       | √       |
| 4.0       | 70.0            | 9.5  | 9.5  | √            | √       | √       |
| 5.0       | 70.0            | 9.5  | 9.5  | √            | √       | √       |
| 6.0       | 70.0            | 9.5  | 9.5  | √            | √       | √       |

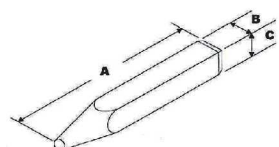


**PRYOR punch set "Goliath"**

Our punch series "Goliath" is a marking tool for heavy duty applications. These steel stamps are produced on larger blanks than the standard ones giving the opportunity to mark with greater strength or when heavy use is required. The stamps of the series "Goliath" are made extra strong and can be also used for metals with a hardness up to 48 Rockwell 'C'.

Our punches are manufactured of f high quality Chromium tool steel. All stamps are hardened precisely, giving a hardness of 58-62 R.C. at the character end and 32-40 R.C. at the striking end. Please note, that the hardness of the component should not exceed 48 R.C.

All sets are delivered in a strong plastic box with separate compartments for each punch to allow rapid selection. The production of these stamps is certificated after ISO 9001:2000. For special security requirements there is a special security holder available.



Engraving: sharp faced  
 Result: readable



| SH (mm) | Abmessung in mm |      |      | Verfügbarkeit |         |         |
|---------|-----------------|------|------|---------------|---------|---------|
|         | A               | B    | C    | Einzel        | Set 0-9 | Set A-Z |
| 3.0     | 89              | 12.7 | 12.7 | √             | √       | √       |
| 5.0     | 89              | 12.7 | 12.7 | √             | √       | √       |
| 6.0     | 89              | 14.3 | 14.3 | √             | √       | √       |
| 8.0     | 89              | 14.3 | 14.3 | √             | √       | √       |
| 10.0    | 102             | 19.0 | 19.0 | √             | √       | √       |
| 12.5    | 102             | 19.0 | 19.0 | √             | √       | √       |

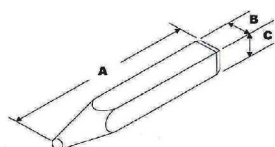
## Steel hand stamps - Punch

## Marking products

### PRYOR punch set "Low stress"

Marking stamps "low stress" or also called "ministress punches" are specially engineered so that lower stress levels are introduced into the component being marked. These punches are used especially for the oil, gas and aircraft industry but also for power plants and similar applications. Instead of the sharp faced characters, these punches are manufactured with a radius engraving to reduce the stress levels. Please see the difference on the following illustration.

Our punches are manufactured of high quality Chromium tool steel. All stamps are hardened precisely, giving a hardness of 58-62 R.C. at the character end and 32-40 R.C. at the striking end. Please note, that the hardness of the component should not exceed 40 R.C.



Engraving: Rounded characters  
 Result: readable



| Size (mm) | Dimensions (mm) |      |      | Availability |         |         |
|-----------|-----------------|------|------|--------------|---------|---------|
|           | A               | B    | C    | Single       | Set 0-9 | Set A-Z |
| 3.0       | 70              | 9.5  | 9.5  | √            | √       | √       |
| 5.0       | 70              | 9.5  | 9.5  | √            | √       | √       |
| 6.0       | 70              | 12.7 | 12.7 | √            | √       | √       |



### PRYOR punch set "Dot stress"

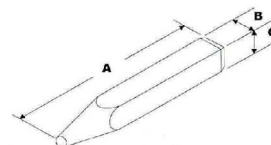
Marking stamps "dot stress" introduce even lower stress levels than the punch "low stress" and enhance fatigue properties. Punches "dot stress" produce a character with similar rounded nose formation to low stress with the added benefit of impressing the character in a dot formation.

Dot stress marking stamps are used especially in the oil, gas and aircraft industry but also for power plants and similar applications. Instead of the sharp faced characters, these punches are manufactured with a radius engraving to reduce the stress levels. Please see the difference on the following illustration.

Marking stamps of the series "dot stress" are available as single punch as well as in sets of A-Z and 0-9 in different sizes. All standard stamps are nickel-plated and protected therefore against rust.

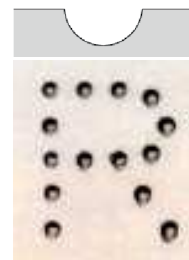
Our steel stamps are manufactured of high quality Chromium tool steel. All punches are hardened precisely, giving a hardness of 58-62 R.C. at the character end and 32-40 R.C. at the striking end. Please note, that the hardness of the component should not exceed 40 R.C.

All sets are delivered in a strong plastic box with separate compartments for each stamp, to allow rapid selection. The production of these stamps is certificated after ISO 9001:2000. For special security requirements there is a special security holder available.



Ausführung: Radius  
 Ergebnis: lesbar, vertieft

| Size (mm) | Dimensions (mm) |      |      | Availability |         |         |
|-----------|-----------------|------|------|--------------|---------|---------|
|           | A               | B    | C    | Single       | Set 0-9 | Set A-Z |
| 3.0       | 70              | 9.5  | 9.5  | √            | √       | √       |
| 5.0       | 70              | 9.5  | 9.5  | √            | √       | √       |
| 6.0       | 70              | 12.7 | 12.7 | √            | √       | √       |
| 8.0       | 70              | 12.7 | 12.7 | √            | √       | √       |



## Steel hand stamps - Punch

## Marking products

### Custom made punches

For individual marking solutions, our engravings department manufactures custom made engraved dies of high quality tool steels (f.e.: 1.1545, 1.2842, 1.2379). These marking stamps are engraved exactly to your requirements and component drawings. Our stamps are engraved precisely to your applications regarding material and hardness to reach an optimum of indenting results and durability.

### Welders' inspection punch

Inspection stamps are special marking tools for quality assurance marking as well as for traceability marking. These stamps can be manufactured in different sizes and layouts. In most cases, a welder's inspection punch comprises of a letter/figure combination, sometimes within a circle, a star symbol or a rectangular.

Usually these stamps are manufactured with a rectangular blank, however, inspection stamps can also be produced with a round body.

Please find some illustrations of a typical inspector punch:



### Custom made engraved punches

Beside the single character punch, punches can also be manufactured comprising more letters/figures/symbols in one stamp only. These custom made marking stamps allow marking of more than one character with one single stroke, which increases the productivity.

Custom made steel stamps are often used when company logos or fixed letter/figure combinations must be marked in mass production. In contrast to a single steel stamp, whole words or number codes can be marked therefore with a single stroke. Saving time and a better marking quality are two convincing arguments!

### Press style custom steel stamps

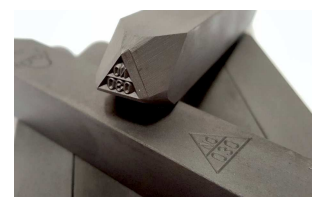
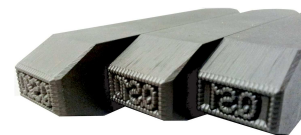
These custom steel stamps are special marking tools with a shank to fit virtually all marking presses. Press dies with shank are usually used for mass-production or serial-production, either with a single percussion press or within an assembly line. The shank, which can also be customized, serves as the connection between the marking die and the marking press. In addition, special shanks for rapid changes of the marking die are available.

The possible applications are countless, custom made engraved steel stamps are used in all parts of the industrial production processes. We manufacture press style custom steel stamps either after drawing or after your sample.

### Roller die - Cigarette printing die

Roller dies and cigarette printing dies are special marking tools used in assembly lines. Either presses or roller marking machines can be used to apply pressure to the dies and mark the component. Roller dies can be manufactured either in brass or in steel, depending on the application.

These marking tools are exclusively custom made, a detailed engineering drawing is needed for the production.



### Custom made punches can be:

- Machine stamp
- Welder's stamp, welder's inspection stamp
- Fly mark
- Jewellery stamp, ring stamp
- Logotype die, Logotype punch
- Round die, embossing die
- Roller die
- Coding type
- Cigarette printing die

